

the cook book extra

Chain & Pearls

**SPECIAL
OFFER!**



**FREE
EYEGLASS**

with selected pieces of jewellery
see inside for details

NEW LOOSE CHAIN - designer silver chain, gold trace chain & gold filled chain

NEW

loose chain
& findings



NEW

loose pearls
& clasps



NEW

everyday
essentials



**25%
OFF**

NEW

finished
jewellery



or by phone call local rate

0845 100 11 22



why not order online at

cooksongold.com

Unchain your creativity with Cookson

We'll give you miles more choice in chain

It's time to unchain your creativity with Cookson. This month's Cook Book Extra mini catalogue brings you extra choice when you want to extend your range of chain and necklaces, with new styles in loose chain and findings.

We're featuring a tempting new range of loose freshwater cultured pearls ready for stringing in this issue. Plus, add any of our featured pearl necklets to your next order and we'll send you a FREE lightweight eyeglass, perfect for gaining a more detailed, magnified view of your work! All this plus great everyday essentials like our portable Daylight Lamp, with 25% off this month!



Loose Chain



Findings



Loose Pearls



why not order online at
cooksongold.com

contents



**loose chain
& findings 5-16**



**loose pearls
& clasps 17-22**



**everyday
essentials 23-27**



**finished
jewellery 28-30**



**emeralds
birthstone of the month 31-32**



or by phone call
0845 100 11 22 local rate

New loose freshwater cultured pearls

Pearls have long been a symbol of purity, wisdom, beauty and wealth, and for the jeweller great for creating imaginative designs.

loose pearls on pages 17-22 ▶

GREAT SELECTION
of shapes, sizes and shades

With any order for selected pearl necklets & bracelets
receive a FREE eyeglass

Perfect for gaining a more detailed, magnified image of your work

Offer ends 27th May



lightweight and easy to use

necklets & bracelets on pages 28-29 ▶

new loose chain & findings for 2008

Plenty of new and different styles of loose chain are included in this years expanded range - Gold filled and Silver designer chain to mention but a few..... ideal for making necklets, bracelets and earrings, ...over to you the designer...



The advantage of buying loose chain is its versatility. It can be easily tailored to specific customer requirements, meaning you don't have expensive stock going to waste because it is the wrong length.

Loose chain is also ideal for creating necklet & bracelet sets.

orderline: 0845 100 11 22

loose chain & findings

gold chain

Long Hammered trace

1.4gm per 30cm in 9ct

new
for
2008

Code: WBT 018
ONLY
£7.22
PER GM

1.8mm Link 

Filled trace

2.8gm per 30cm in 9ct

new
for
2008

Code: WBU 018
ONLY
£7.22
PER GM

1.8mm Link 

Round Hammered link

5.3gm per 30cm in 9ct

new
for
2008

Code: WBT 060
ONLY
£7.22
PER GM

6.0mm Link 



Please note that all prices are intended to be used as a guide. They are based on precious metal prices which vary on a daily basis; are cash prices and exclusive of VAT.

loose chain & findings

gold findings



Bolt Rings - 9 Carat

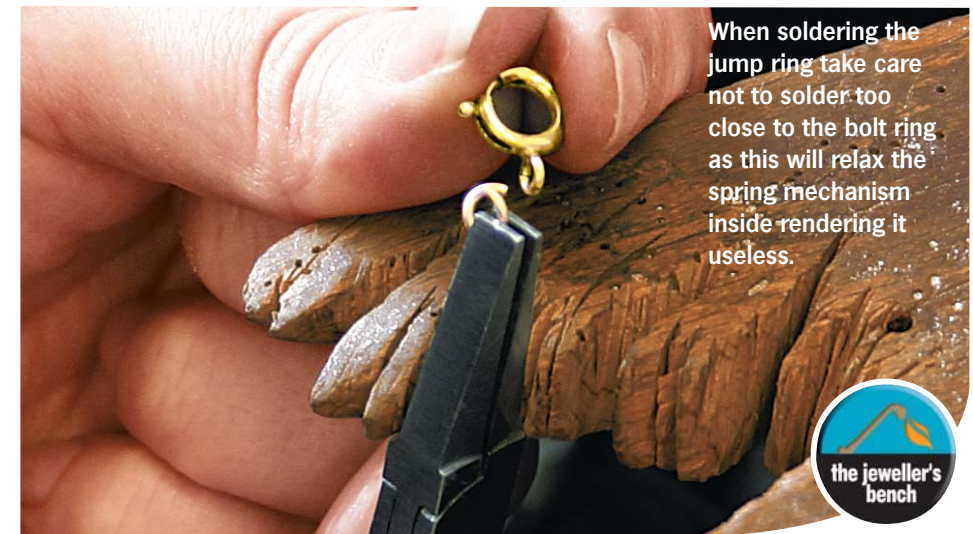
Open

multibuy code	Size & Style	Wgt.	multibuy price per qty	
			1 pack	2-4 packs
NBD 050X	5.0mm Standard	0.1g	4.13	3.77
NBD 055X	5.5mm Heavy	0.2g	7.75	7.28
NBD 060X	6.0mm Standard	0.1g	5.85	5.32

Closed

multibuy code	Size & Style	Wgt.	multibuy price per qty	
			1 pack	2-4 packs
NBD C50X	5.0mm Standard	0.1g	4.15	3.81
NBD C05X	5.0mm Heavy	0.1g	8.40	7.75
NBD C55X	5.5mm Heavy	0.1g	7.75	7.28
NBD C60X	6.0mm Standard	0.1g	6.19	5.67

price saving
now
sold in
pks of **6**



When soldering the jump ring take care not to solder too close to the bolt ring as this will relax the spring mechanism inside rendering it useless.



Please note that all prices are intended to be used as a guide. They are based on precious metal prices which vary on a daily basis; are cash prices and exclusive of VAT.

loose chain & findings

gold chain & findings

Oval Diamond belcher
1.4gm per 30cm in 9ct
2.0mm Link

Code: WBA A00
ONLY
£7.57
PER GM



Oval Diamond belcher
3.0gm per 30cm in 9ct
2.2mm Link

Code: WBA B00
ONLY
£7.54
PER GM



Oval Diamond belcher
6.2gm per 30cm in 9ct
3.0mm Link

Code: WBA C00
ONLY
£7.45
PER GM



Oval Diamond belcher
10.9gm per 30cm in 9ct
3.8mm Link

Code: WBA D00
ONLY
£7.42
PER GM



9ct Hallmark Tags - HTC HTD

multibuy code	Size & Style	multibuy price per qty	
		1pk	2-4pks
NBB 005X	HTC JC29	2.86	2.71
NBB 002X	HTD 536	4.25	4.14

9ct Lobster Trigger Clasps - Oval

Code	Size & Style	price per qty	
		0-9	10-24
NBF L08	8mm	2.56	2.39
NBF L10	9mm	4.55	4.20
NBF L11	11mm	5.38	5.02
NBF L14	13mm	7.75	7.29

price saving
now sold in pks of **6**



HTC HTD

From Only **2.39** each!



Please note that all prices are intended to be used as a guide. They are based on precious metal prices which vary on a daily basis; are cash prices and exclusive of VAT.

loose chain & findings

gold filled chain & findings

An alternative to 9ct gold products

ring & toggle fittings
10mm ring, 12mm toggle

N1D B01

£2.76



ring & toggle fittings
10mm ring, 25mm toggle

N1D B03

£4.88



ring & toggle fittings
10mm ring, 12mm toggle

N1D B02

£2.76



gold filled chain

Gold filled jump rings and bolt rings also available



This is a base metal alloy bonded with a surface veneer of 14ct gold

name	size	Weight per 30 cm	Code	
Gold Filled Oval Link	7.7x9.6mm	8.40	W1B 100	£1.85 per gm
Gold Filled Round Hammered Link	9.5mm	5.00	W1B 101	£1.85 per gm
Gold Filled Plain & Twisted Link	16mm	11.20	W1B 102	£2.25 per gm
Gold Filled Twisted Shaped link	16mm	12.00	W1B 103	£2.25 per gm



Please note that all prices are intended to be used as a guide. They are based on precious metal prices which vary on a daily basis; are cash prices and exclusive of VAT.

loose chain & findings

platinum chain styles

call
0845
100 11 22
or go online at
cooksongold.com for
current prices

**Diamond
Cut curb**
1.5gm per 30cm
1.0mm Link



Code: WTD B00

**35
Spiga**
3.3gm per 30cm
1.1mm Link

Code: WTT 035

**Plain
Round trace**
3.3gm per 30cm
1.5mm Link

Code: WTT F00

**30 Round
snake**
3.3gm per 30cm
0.8mm Link

Code: WTT 030



Platinum Chain

Platinum is the hardest of the precious metals, it never tarnishes. Its intense lustre remains intact over the years, and it is completely hypoallergenic

Please note that all prices are intended to be used as a guide. They are based on precious metal prices which vary on a daily basis; are cash prices and exclusive of VAT.

loose chain & findings

platinum findings

UK's
largest range
of platinum
findings

**Bolt
rings**



5mm open

Code: NZD 050



6mm open

Code: NZD 060

Caribiner Clasps

8.5mm



Code: NZH H30

Heavyweight Jump Rings 3.9g per 100

Sizes
range from
3 - 5mm



Code: NZPA T08



Please note that all prices are intended to be used as a guide. They are based on precious metal prices which vary on a daily basis; are cash prices and exclusive of VAT.

loose chain
& findings

loose chain & findings

silver chain

Mirror trace

23.0gm per 30cm
6.0mm Link

Code: WVT 854
ONLY
71p
PER GM



15mm Round & Flat Plain interlink

23.10gm per 30cm
15mm Link

Code: WVE 341
ONLY
£1.21
PER GM



10mm Ring with 2 movable beads

12.0gm per 30cm
10mm Link

Code: WVE 340
ONLY
£1.31
PER GM



21mm Hammered & Plain interlink

22.50gm per 30cm
21mm Link

Code: WVE 342
ONLY
£1.21
PER GM



Please note that all prices are intended to be used as a guide. They are based on precious metal prices which vary on a daily basis; are cash prices and exclusive of VAT.

loose chain & findings

silver findings

Lobster trigger clasps

9mm



Code: NVF L09
FROM
£1.07
EACH

15mm



Code: NVF L15
FROM
£1.84
EACH

11mm



Code: NVF L11
FROM
£1.27
EACH

17mm



Code: NVF L17
FROM
£2.57
EACH

13mm



Code: NVF L13
FROM
£1.40
EACH

S shape hook clasps silver

10mm

14mm



Code: NVD H01
FROM
ONLY
£2.79
EACH



Please note that all prices are intended to be used as a guide. They are based on precious metal prices which vary on a daily basis; are cash prices and exclusive of VAT.

loose chain
& findings

loose chain & findings

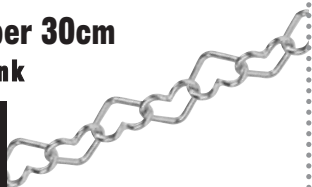
silver chain & findings

From Only
66p
per gram

Heart link

8.80gm per 30cm
6.0mm Link

Code: WVE 201
ONLY
66p PER GM



Textured Oval link

15.90gm per 30cm
12x8mm Link

Code: WVE 202
ONLY
66p PER GM



14.5mm Ring with round round wire toggle

Code: NVF 505
FROM
£5.38 EACH



Hammered Round link

8.40gm per 30cm
10mm Link

Code: WVE 205
ONLY
66p PER GM



Hammered Round link

9.0gm per 30cm
7.5mm Link

Code: WVE 204
ONLY
66p PER GM



Hammered Navette link

6.90gm per 30cm
13x7mm Link

Code: WVE 203
ONLY
66p PER GM



loose chain & findings

silver chain & findings

A fashionable and decorative way to fasten necklets and bracelets. These heavy weight fittings can be engraved, enamelled and stone set to enhance style, but are also stylish enough to be used on their own.

Ring and toggle clasp



7mm - 10mm bar

new
for 2008

Code: NVF 098
ONLY
£1.37 EACH



9mm - 15mm bar

Code: NVF 099
ONLY
£2.23 EACH



15mm - 23mm bar

Code: NVF 100
ONLY
£5.53 EACH

3 x 1 Round link

10.70gm per 30cm
10mm Link

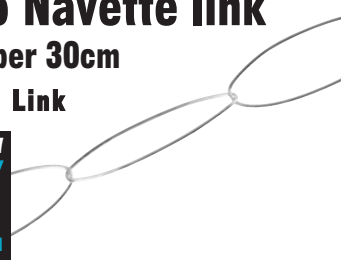
Code: WVE 206
ONLY
66p PER GM



Macro Navette link

5.30gm per 30cm
45x15mm Link

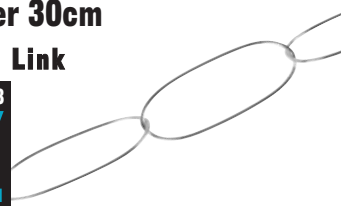
Code: WVE 207
ONLY
66p PER GM



Macro Oval link

6.0gm per 30cm
35x20mm Link

Code: WVE 208
ONLY
66p PER GM



Silver Chain

These "macro" link chains are in line with the current fashion trend for the big & bold look.



Please note that all prices are intended to be used as a guide. They are based on precious metal prices which vary on a daily basis; are cash prices and exclusive of VAT.

Please note that all prices are intended to be used as a guide. They are based on precious metal prices which vary on a daily basis; are cash prices and exclusive of VAT.

loose chain & findings

silver chain & findings

These multi link chains make great drops on any ear fitting. The link forms a box shape which looks solid in a static position but has wonderful fluid movement.

Silver Multi Link chain
ring ring (bead)
12.10gm per 30cm
7.5mm

new
for
2008

Code: WVE 331
ONLY
£1.06
PER GM



Silver Multi Link chain
ring ring (bead)
4.5mm

new
for
2008

Code: WVE 332
ONLY
£1.03
PER GM



Ring and toggle fittings

new
for
2008



Code: NVF 510
FROM
£9.26
EACH



Code: NVF 511
FROM
£3.82
EACH



Code: NVF 512
FROM
£3.65
EACH



Adding a snake chain to a ring and toggle.

the jeweller's bench

Please note that all prices are intended to be used as a guide. They are based on precious metal prices which vary on a daily basis; are cash prices and exclusive of VAT.

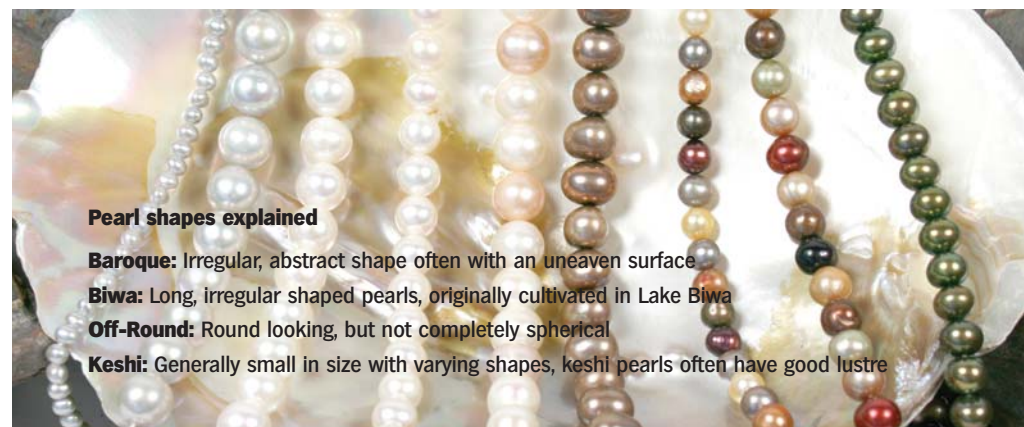
loose pearls & clasps

new
for
2008

NEW Freshwater Cultured Pearls

Pearls have long been a symbol of purity, wisdom, beauty and wealth, and for the jeweller great for creating imaginative designs.

We hope that this range of Chinese freshwater cultured pearls with a good selection of shapes and colours, including new chocolate shades, will inspire you to create fabulous designs.



Pearl shapes explained

Baroque: Irregular, abstract shape often with an uneven surface

Biwa: Long, irregular shaped pearls, originally cultivated in Lake Biwa

Off-Round: Round looking, but not completely spherical

Keshi: Generally small in size with varying shapes, keshi pearls often have good lustre

loose pearls





Code	Description	Dimensions	Length	Price per strand
 61PL F018	 Off-Round White	7.5 - 8mm	44cm	61.25
 61PL F019	 Off-Round White	9 - 10mm	40cm	55.00
 61PL F020	 Off-Round White	10 - 11mm	45cm	98.75
 61PL F017	 Off-Round Natural Multi-Tone	9 - 10mm	40cm	68.85
 61PL F016	 Off-Round Natural Multi-Tone	6 - 7mm	45cm	32.50
 61PL F023	 Off-Round Grey	3 - 4mm	45cm	11.75

Please note that all prices are intended to be used as a guide and are exclusive of VAT.

loose pearls



Code	Description	Dimensions	Length	Price per strand
 61PL F024	 Off-Round Grey	10 - 11mm	45cm	56.25
 61PL F005	 Keshi White	10mm	45cm	43.75
 61PL F006	 Biwa Natural	3 x 30mm	41cm	56.25

Please note that all prices are intended to be used as a guide and are exclusive of VAT.



loose pearls



Code	Description	Dimensions	Length	Price per strand
61PL F007	Biwa Multi-Colour	7 x 18mm	44cm	36.25
61PL F014	Off-Round Multi Coloured	6 - 7mm	45cm	6.80
61PL F015	Off-Round Multi Coloured	7 - 8mm	40cm	6.25
61PL F012	Oval Chocolate	8 - 9mm	41cm	12.50
61PL F013	Off-Round Green	7 - 8mm	41cm	11.75
61PL F011	Off-Round Brown Multi-Tone	9 - 10mm	40cm	22.50
61PL F022	Off-Round Anthracite	10 - 11mm	45cm	98.75

Please note that all prices are intended to be used as a guide and are exclusive of VAT.

multi-strand pearls



Oval Brown Multi-Tone

Dimension: 3 - 4mm
Length: 40cm x 4 strands

Code: 61PL F010
ONLY
£17.50

Button White

Dimension: 4 - 4.5mm
Length: 41cm x 4 strands

Code: 61PL F003
ONLY
£19.35

Baroque White

Dimension: 5 - 6mm
Length: 45cm x 3 strands

Code: 61PL F002
ONLY
£13.85

Oval Natural Multi-Tone

Dimension: 4 - 5mm
Length: 40cm x 4 strands

Code: 61PL F004
ONLY
£19.35

Baroque Anthracite

Dimension: 4 - 5mm
Length: 45cm x 3 strands

Code: 61PL F021
ONLY
£9.96



Please note that all prices are intended to be used as a guide and are exclusive of VAT.

clasps



Code: NVF 250
FROM
£5.36
EACH

'S' hook with 2 end caps
with internal bar, silver 15mm

Code: NVF 056
FROM
£17.10
EACH

new
for 2008



'S' shape clasp with
end rings
silver, 12mm also available in 18Y



new
for 2008

Code: NVF 239
FROM
£6.07
EACH

Fancy clasp with
hook tongue
silver 10 x 10mm

Code: NBF 028
FROM
£13.28
EACH



9Y Plain ball clasps - 8mm

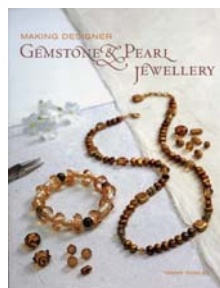
also available in silver, 18Y and 18W, sizes include 8mm, 7mm & 10mm



Code: NBF 216
FROM
£18.88
EACH

9Y Plain ball clasps - 10mm

also available in silver, from £5.38



Code: 999 A31
ONLY
£12.99

Making Designer Gemstone & Pearl Jewellery

By Tammy Powley

This book shows you how to create the latest jewellery fashions with a few readily available tools and some basic jewellery-making techniques. With special insights on the folklore and healing powers associated with the various gemstones, each project provides readers with a unique angle for making gem and design choices for their creations.

Practical 5 clasps

The latest techniques in making clasps with a series of clear illustrations & informative text.



Code: 999 A18
ONLY
£19.50

everyday essentials



Red Dialux

100g - High grade
polishing compounds
For a very high finish
for gold and silver

Code: 998 215
ONLY
£4.36
EACH



Blue Dialux

100g - High grade
polishing compounds
For super fine polishing
of all metals

Code: 998 217
ONLY
£4.36
EACH

Protective equipment Hand and body protection Safety Spectacles



Code: 999 244
ONLY
£4.61
PER PAIR

Gloves



Code: 998 077A
ONLY
£4.86
PER 100

everyday
essentials

Please note that all prices are intended to be used as a guide. They are based on precious metal prices which vary on a daily basis; are cash prices and exclusive of VAT.

Please note that all prices are intended to be used as a guide and are exclusive of VAT.

everyday essentials

Bead Board

Each board is flocked grey to reduce eye strain and help keep objects in place, with 10 recessed storage bins. Size 26cm wide x 49cm long with 3 working channels.

Bead Board only

Code: 998 424B
ONLY
£3.75
EACH

new
for
2008



UNDER
£4!

Bead Mat

This soft mat keeps beads from rolling around and cushions hands while stringing.

Beige 19.7cm²

Code: 998 424E
ONLY
£3.00
PK/2

new
for
2008



pack of
2

Sorting Trays

Long wooden 347mm (14")

Code: 998 424
ONLY
£7.69
EACH



Sorting Trays

Plastic 100mm (4") Black

also available
in white



Code: 998 425
ONLY
£4.72
EACH

Please note that all prices are intended to be used as a guide and are exclusive of VAT.

everyday essentials

7" Straight 'Footprint' shears



Code: 999 659
ONLY
£16.20
EACH

7" Straight 'Footprint' shears with spring



Code: 999 660
ONLY
£18.48
EACH

7" Curved 'Footprint' shears



Code: 999 661
ONLY
£19.72
EACH

Round nosed pliers - 115mm sprung



Code: 999 697
ONLY
£9.82
EACH



Straight 'Footprint' shears can be used to cut silver sheet

Please note that all prices are intended to be used as a guide and are exclusive of VAT.



everyday
essentials

25

24

orderline: 0845 100 11 22

order online: cooksongold.com

everyday essentials

Silver Solder Strip

Order Code	Type	Dimensions	Weight per strip	Melt Range
CTA 500	Extra Easy	2.0 x 0.45mm	5g	667°C - 709°C
CTB 500	Easy	3.0 x 0.50mm	9g	705°C - 723°C
CTC 500	Medium	1.5 x 0.70mm	6g	720°C - 765°C
CTD 500	Hard	5.0 x 0.60mm	18g	745°C - 778°C
CTE 500	Enamelling	1.5 x 1.00mm	9g	730°C - 800°C

All solder strip normally sold in 600mm (2ft) lengths.

Silver Solder Paste

Order Code	Type & Size	Melt Range
PAT 020	Easy	680°C
PAT 100	Medium	730°C
PAT 075	Hard	770°C

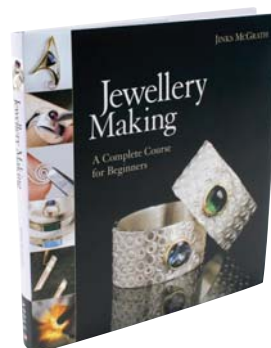
Solder paste is assay quality, ready fluxed solder and comes in a 30g syringe.



Jewellery Making

By Jinks McGrath

This practical book is a complete course in designing and making jewellery. Clear, step-by step instructions and photographs demonstrate essential processes and techniques ranging from setting up your workbench, hammering and casting, to polishing and finishing.



new
for 2008

Code: 999 A49
ONLY
£14.99

everyday essentials

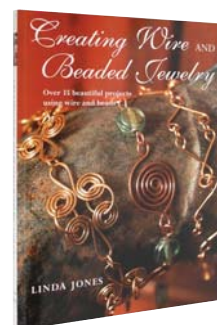
Daylight Lamp

Portable daylight viewing lamp.
Light source: 9Watt daylight bulb
Supplied with: tube

Please note: This product is mains operated

25% OFF

Code: 999 CJY
WAS £57.10
NOW
£42.71
EACH



new
for 2008

Code: 999 A59
ONLY
£12.99

Creating wire and beaded jewellery

By Linda Jones

This practical book is a complete course in designing and making jewellery. Clear, step-by step instructions and photographs demonstrate essential processes and techniques ranging from setting up your workbench, hammering and casting, to polishing and finishing.

Soldering Block

Natural charcoal block, reflects heat back towards the work piece for maximum soldering results.



Code: 999 970
ONLY
£8.92
EACH

Please note that all prices are intended to be used as a guide. They are based on precious metal prices which vary on a daily basis; are cash prices and exclusive of VAT.

Please note that all prices are intended to be used as a guide and are exclusive of VAT.

finished jewellery



With any order of these
NECKLETS OR BRACELETS
get a
FREE
eyeglass!



Cultured Freshwater Pearl Necklet

4 row illusion necklet with irregular pink pearls 41cm + 5cm extension

Code: VPM 066
ONLY
£7.90
EACH



Cultured Freshwater Pearls on Silver Chains Necklets

Silver 4 rows trace chain with 4 oval coloured pearls - 41cm long

Code: VPM 154
ONLY
£17.90
EACH



Cultured Freshwater Pearls on Silver Chains Necklets

Silver Y necklet with 3 rows belcher chain & 6 pearls - 45cm

Code: VPM 073
ONLY
£28.75
EACH

With any order of these
NECKLETS OR BRACELETS
get a
FREE
eyeglass!



finished jewellery



Cultured Freshwater Pearls on Silver Chains Necklets

Silver Y necklet with 3 rows belcher chain & 6 rose pearls - 45cm

Code: VPM 075P
ONLY
£28.75
EACH



Cultured Freshwater Pearl Bracelets

18.5cm of 5.5mm white pearls & 2.5mm silver beads, with silver bolt ring clasp

Code: VPM 120
ONLY
£11.36
EACH



Cultured Freshwater Pearl Bracelets

18cm elasticated oval white pearls

Code: VPM 017
ONLY
£5.11
EACH



Cultured Freshwater Pearl Bracelets

18cm elasticated oval black pearls with silver spacers

Code: VPM 083
ONLY
£16.70
EACH

Please note that all prices are intended to be used as a guide. They are based on precious metal prices which vary on a daily basis; are cash prices and exclusive of VAT.

Please note that all prices are intended to be used as a guide. They are based on precious metal prices which vary on a daily basis; are cash prices and exclusive of VAT.

finished jewellery

9ct gold basket claw set cubic zirconia studs,
available in round and square in various sizes from 4mm-9mm

Basket Set CZ Studs pairs, complete with scrolls

round
9Y 6mm CZ studs

Code: XHA 2005
ONLY
£5.29
PER PAIR



new
for
2008

Basket Set CZ Studs pairs, complete with scrolls

round
9W 6mm CZ studs

Code: XHC 2001
ONLY
£5.89
PER PAIR



new
for
2008

Basket Set CZ Studs pairs, complete with scrolls

square
9Y 6mm CZ studs

Code: XHA 2011
ONLY
£6.59
PER PAIR



new
for
2008

Basket Set CZ Studs pairs, complete with scrolls

square
9W 6mm CZ studs

Code: XHC 2007
ONLY
£7.16
PER PAIR



new
for
2008

**Emerald Commercial -
medium colour, little
zoning, slight inclusions**
emerald commercial - round
3.0mm/0.13 Ct.Wt.*

Code: 61EM AGEN
ONLY
£2.14
EACH



**Emerald Commercial -
medium colour, little
zoning, slight inclusions**
emerald commercial - round
4.0 - 4.5mm/0.26 Ct.Wt.*

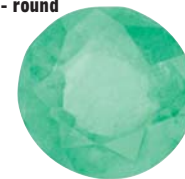
Code: 61EM AGES
ONLY
£5.35
EACH



**many
more sizes
available**

**Emerald Bright
Standard - bright colour,
slight inclusions**
emerald bright standard - round
2 - 2.1mm/0.04 Ct.Wt.*

Code: 61EM AGFN
ONLY
£1.54
EACH



**Emerald Bright
Standard - bright colour,
slight inclusions**
emerald bright standard - round
2.9 - 3.1mm/0.13 Ct.Wt.*

Code: 61EM AGFN
ONLY
£3.30
EACH



**Emerald Bright
Standard -
bright colour,
slight inclusions**
emerald bright
standard - round
2.4 - 2.6mm/0.07 Ct.Wt.*

* Carat weight is approximate

Code: 61EM AGFK
ONLY
£1.54
EACH



Please note that all prices are intended to be used as a guide. They are based on precious metal prices which vary on a daily basis; are cash prices and exclusive of VAT.

Please note that all prices are intended to be used as a guide and are exclusive of VAT.

best selling emeralds

emeralds

finished
jewellery



emerald

May's birthstone

of the month

The earliest known gem market in Babylon was trading emeralds as early as 4000 BC.

This gem is a variety of the mineral Beryl and occurs within dark shales and limestones in Colombia's Muzor and Chivor regions.

Until the Spanish conquest of Colombia in the 16th century, Egypt and Austria supplied the Romans and medieval Europe.

Some very fine stones are also mined at Sandawana in Zimbabwe, Kitwe in Zambia and Swat in Pakistan.

Birthstone Studs

complete with scrolls

synthetic emerald - 9Y 5mm CZ studs



Code: XHA 2018
ONLY
£6.49
PER PAIR

FREE

gemstone

wallchart

To obtain your free wall chart go
online at cooksongold.com or
call 0845 100 11 22

gemstones from cookson

Diamond Sizing Chart

Carat Weight	Width (mm)	Depth (mm)	Table (mm)	Heights (mm)	Thickness (mm)
0.25	5.0	3.0	5.5	0.8	0.4
0.50	6.5	3.9	7.0	1.0	0.5
0.75	7.5	4.5	8.0	1.2	0.6
1.00	8.0	5.0	8.5	1.5	0.7
1.25	8.5	5.5	9.0	1.6	0.8
1.50	9.0	6.0	9.5	1.8	0.9
2.00	10.0	6.5	10.0	2.0	1.0
2.50	11.0	7.0	11.0	2.2	1.1
3.00	12.0	7.5	12.0	2.4	1.2
3.50	13.0	8.0	13.0	2.6	1.3
4.00	14.0	8.5	14.0	2.8	1.4
4.50	15.0	9.0	15.0	3.0	1.5
5.00	16.0	9.5	16.0	3.2	1.6
5.50	17.0	10.0	17.0	3.4	1.7
6.00	18.0	10.5	18.0	3.6	1.8
6.50	19.0	11.0	19.0	3.8	1.9
7.00	20.0	11.5	20.0	4.0	2.0
7.50	21.0	12.0	21.0	4.2	2.1
8.00	22.0	12.5	22.0	4.4	2.2
8.50	23.0	13.0	23.0	4.6	2.3
9.00	24.0	13.5	24.0	4.8	2.4
9.50	25.0	14.0	25.0	5.0	2.5
10.00	26.0	14.5	26.0	5.2	2.6
10.50	27.0	15.0	27.0	5.4	2.7
11.00	28.0	15.5	28.0	5.6	2.8
11.50	29.0	16.0	29.0	5.8	2.9
12.00	30.0	16.5	30.0	6.0	3.0
12.50	31.0	17.0	31.0	6.2	3.1
13.00	32.0	17.5	32.0	6.4	3.2
13.50	33.0	18.0	33.0	6.6	3.3
14.00	34.0	18.5	34.0	6.8	3.4
14.50	35.0	19.0	35.0	7.0	3.5
15.00	36.0	19.5	36.0	7.2	3.6
15.50	37.0	20.0	37.0	7.4	3.7
16.00	38.0	20.5	38.0	7.6	3.8
16.50	39.0	21.0	39.0	7.8	3.9
17.00	40.0	21.5	40.0	8.0	4.0
17.50	41.0	22.0	41.0	8.2	4.1
18.00	42.0	22.5	42.0	8.4	4.2
18.50	43.0	23.0	43.0	8.6	4.3
19.00	44.0	23.5	44.0	8.8	4.4
19.50	45.0	24.0	45.0	9.0	4.5
20.00	46.0	24.5	46.0	9.2	4.6
20.50	47.0	25.0	47.0	9.4	4.7
21.00	48.0	25.5	48.0	9.6	4.8
21.50	49.0	26.0	49.0	9.8	4.9
22.00	50.0	26.5	50.0	10.0	5.0
22.50	51.0	27.0	51.0	10.2	5.1
23.00	52.0	27.5	52.0	10.4	5.2
23.50	53.0	28.0	53.0	10.6	5.3
24.00	54.0	28.5	54.0	10.8	5.4
24.50	55.0	29.0	55.0	11.0	5.5
25.00	56.0	29.5	56.0	11.2	5.6
25.50	57.0	30.0	57.0	11.4	5.7
26.00	58.0	30.5	58.0	11.6	5.8
26.50	59.0	31.0	59.0	11.8	5.9
27.00	60.0	31.5	60.0	12.0	6.0
27.50	61.0	32.0	61.0	12.2	6.1
28.00	62.0	32.5	62.0	12.4	6.2
28.50	63.0	33.0	63.0	12.6	6.3
29.00	64.0	33.5	64.0	12.8	6.4
29.50	65.0	34.0	65.0	13.0	6.5
30.00	66.0	34.5	66.0	13.2	6.6
30.50	67.0	35.0	67.0	13.4	6.7
31.00	68.0	35.5	68.0	13.6	6.8
31.50	69.0	36.0	69.0	13.8	6.9
32.00	70.0	36.5	70.0	14.0	7.0
32.50	71.0	37.0	71.0	14.2	7.1
33.00	72.0	37.5	72.0	14.4	7.2
33.50	73.0	38.0	73.0	14.6	7.3
34.00	74.0	38.5	74.0	14.8	7.4
34.50	75.0	39.0	75.0	15.0	7.5
35.00	76.0	39.5	76.0	15.2	7.6
35.50	77.0	40.0	77.0	15.4	7.7
36.00	78.0	40.5	78.0	15.6	7.8
36.50	79.0	41.0	79.0	15.8	7.9
37.00	80.0	41.5	80.0	16.0	8.0
37.50	81.0	42.0	81.0	16.2	8.1
38.00	82.0	42.5	82.0	16.4	8.2
38.50	83.0	43.0	83.0	16.6	8.3
39.00	84.0	43.5	84.0	16.8	8.4
39.50	85.0	44.0	85.0	17.0	8.5
40.00	86.0	44.5	86.0	17.2	8.6
40.50	87.0	45.0	87.0	17.4	8.7
41.00	88.0	45.5	88.0	17.6	8.8
41.50	89.0	46.0	89.0	17.8	8.9
42.00	90.0	46.5	90.0	18.0	9.0
42.50	91.0	47.0	91.0	18.2	9.1
43.00	92.0	47.5	92.0	18.4	9.2
43.50	93.0	48.0	93.0	18.6	9.3
44.00	94.0	48.5	94.0	18.8	9.4
44.50	95.0	49.0	95.0	19.0	9.5
45.00	96.0	49.5	96.0	19.2	9.6
45.50	97.0	50.0	97.0	19.4	9.7
46.00	98.0	50.5	98.0	19.6	9.8
46.50	99.0	51.0	99.0	19.8	9.9
47.00	100.0	51.5	100.0	20.0	10.0

why not order online at
cooksongold.com

or by phone call
0845 100 1122 local rate

or call into one of our trade counters
in London's Hatton Garden or
Birmingham's Jewellery Quarter

cooksongold.com 0845 100 11 22