

Top 5 Types Of Engagement Ring Settings For Beginner Metalsmiths

Check out our top 5 types of engagement ring settings and the best gemstone cuts to accompany them, from the classics to the vintage-inspired, and all-new alternatives.



▶ Prong Setting

- Prong settings, a.k.a claw settings, work like small metal claws that hold the stone in place
- Works well with classic solitaire engagement rings - whether three, four, or six prongs, this setting helps the stone catch the light from all angles

Difficulty Level: **LOW**

TOP TIP

The thinner the band, the larger the solitary stone will appear

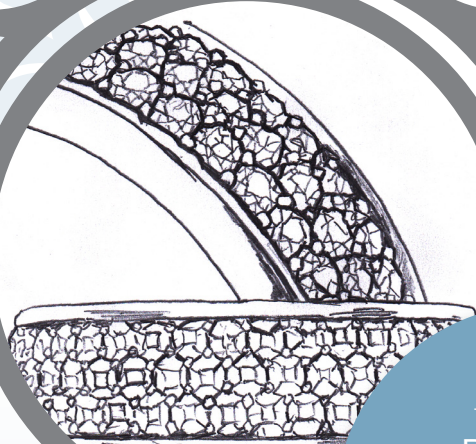
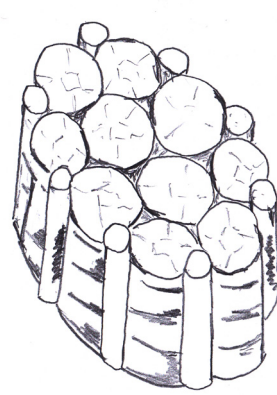
Cluster Setting ▶

- Largely created using multiple smaller stones and multiple prong settings to give the illusion of a larger stone
- Often shared prongs are used to hold stones in place so that more of each stone is visible

Difficulty Level: **MEDIUM**

TOP TIP

There are no rules when it comes to creating cluster stones – different types of settings can be used to create the illusion of one large stone



▶ Pavé Setting

- An intricate setting that paves a band in diamonds
- Each stone is placed closely to the next creating the illusion that each one is floating
- Each stone is set in place with a tiny prong setting

Difficulty Level: **HIGH**

TOP TIP

Resizing an engagement ring with pavé settings is much more difficult than resizing a plain band

Channel Setting ▶

- The difference between a pavé and channel setting: where pavé set stones are held in place with prongs, channel set stones are held in place by a thin metal strip
- The channel itself makes the stones level with the engagement ring band

Difficulty Level: **HIGH**

TOP TIP

Channel set stones in a band should be recommended over a pavé set band for customers with active lifestyles



▶ Halo Setting

- A central stone set in place surrounded by a halo of smaller gemstones
- An excellent choice of setting to make a smaller stone appear larger with a halo of similar stones

Difficulty Level: **HIGH**

REMEMBER

Introduce pavé settings along the band for maximum sparkle

Get ready to become a metalsmith
with Cooksongold



Cooksongold

Heimerle + Meule Group