

Level of
design:
Beginner



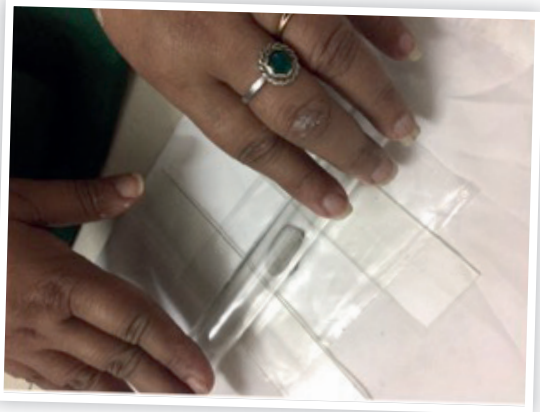
What you'll need:

<i>Art Clay Silver 10 gms</i>	855 201
<i>Brass Plate Beech Pattern</i>	700 500
<i>Silver Embeddable Pre Notched 4 Prong Round Setting 4mm Pack of 10</i>	855 509
<i>White Cz, Round 4mm, Pmc Safe (pack of 30)</i>	61CZP400
<i>Sterling Silver Jump Ring Heavy 7mm</i>	NVH H70
<i>A Small Toothpick</i>	
<i>Hand Torch</i>	999 7703
<i>Gold Pro Max Barrelling Machine With Free Starter Kit</i>	999 6025
<i>A Silver Chain (see Cookonsold.com for our full collection)</i>	
<i>Spacer And Roller Set</i>	700 591
<i>Cutter Square Pack of 6</i>	700 538
<i>Pusher Style 3, Square End</i>	999 AKT
<i>Needle Files</i>	999 529
<i>Brass Brush</i>	700 596

Silver Clay Square Rose

By Kavitha Balakrishnan

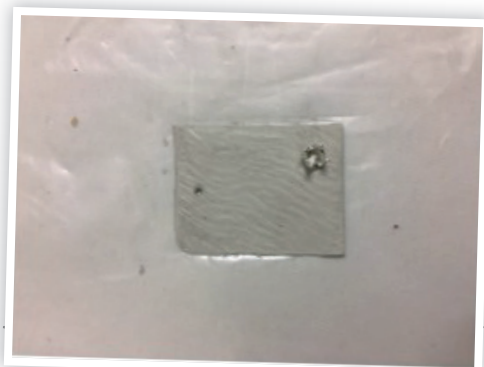
Silver clay is a fantastic and simple way to create designs in fine silver for jewellers of all levels. Why not try this easy to make square rose pendent project by Kavitha Balakrishnan.



Step 1

Create the Square

Roll clay so it is around 2mm thick using the roller and spaces. Then place the brass stencil design on top of the clay and roll it lightly. After remove from the brass. Then with a knife or a square cutter cut the clay to a square shape around 20mm long. Then pierce on the top which we will use to insert jumping for the pendant later.

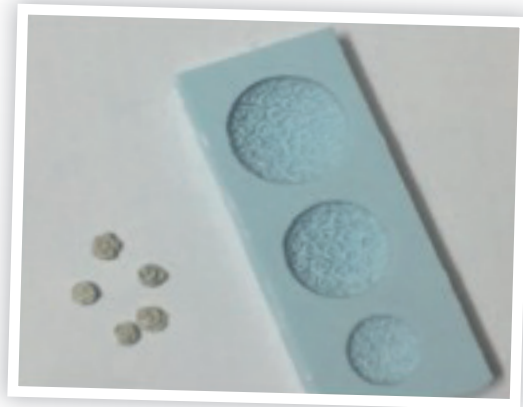


Step 2

Insert the Prong

Take the prong and insert a white stone into it and close it with a help of a prong pusher, using it to push gently on the prongs until they move over and secure the stone. Then insert the entire finding on the pendant by pushing it down onto the silver clay until it is secure in place.

Optional: You can round the edges of the pendant at this stage if you wish to.



Step 3

Create the Roses

Take another small clay ball and press it in the rose mould then move and cut small roses.



Wet the roses at the bottom with a lightly watered brush and place each rose on the bottom of the square pendant.

Step 4

Fire and Polish

With needle files, carefully remove the excess clay on all sides. Then fire the pendant at the temperature that has been given with the clay in the instructions book or on the packaging. After firing remove the white residue with a brass brush gently. Polish it with a polishing cloth or put it in a Barrelling Machine to tumble.

Step 5

Finish

Polish the pendant so that the raised edges shine. Insert a jump ring onto the pendant and thread onto a chain of your choice and voila!

