



# Personalised Chunky Gent's ID Bracelet

By Lydia Niziblian

Want to make this simply stunning Personalised Chunky Gent's ID Bracelet? Follow these four easy steps by Lydia Niziblian.

## What you'll need:

Sterling Silver 85/4 Plain Curb Chain (order wrist size – 1.5" inches)	WVC T00
12 x 50mm of Sterling Silver Sheet 1.3mm Thick	CSA 130
8 x 13mm of Sterling Silver Sheet 0.5Mm Thick	CSA 050
1 x 10mm Sterling Silver Flat Profile Bolt Ring	NVD B10
1 x 8mm Heavy Jump Ring	NVH H80

## Tools:

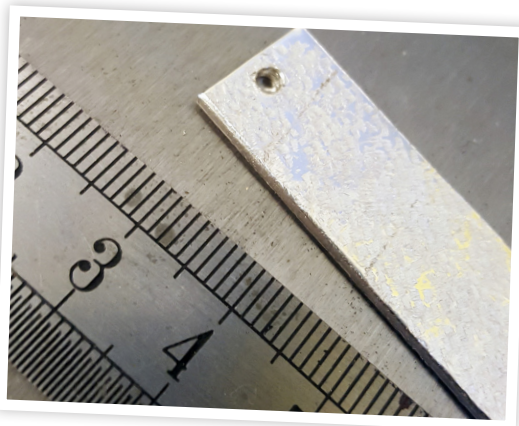
Fretz Texturing Hammer	997 3106
Stainless Steel Block	997 V002
Easy Solder Paste Syringe	PAT 021
Half Round Pliers with Nylon Jaws	999 727
Files	999 529
Flush or wire cutters	997 3026
Sandpaper	973 090
Starters Soldering Kit	999 096Q
Drill with 2.5mm Bit (Optional)	970 140A
Letter/number stamps to personalise (optional) (see our impress art range)	



## Step 1

### Texture

Place the 50mm x 12mm piece of silver on your stainless steel block, and use the texturing hammer to texture one side of it.



## Step 2

### Add Holes

Measure 2.5mm in from each end of the silver, making sure the mark is halfway up on each side and mark with permanent pen. Use these as guides to drill a hole in each end. \* Optional: You can lightly use a round 3mm burr on either side of your drill holes to slightly recess them.

## Step 4

### Anneal and Curve

Anneal the silver, then use half round pliers to gently curve each end of the metal. You want to end up with a shape that will sit comfortably on the wrist, like the image below. You could also shape it using a bracelet mandrel.



## Step 3

### File the Edges

Use a metal file to file a 45° angle on each upper edge of the silver. Gently round the corners off the rectangle with the file too. Finish all edges with emery paper in increasing fineness until smooth.



## Step 5

### Personalise

You can either use the thinner piece of silver as is, or if you want to personalise it, use a steel block, heavy hammer and letter/number punches to do so. Remember to leave at least 1mm border around the edge to allow for finishing. Once you have stamped your silver, use coarse sandpaper to file the top long edges at 45°, then use a finer grade paper to smooth.



## Step 6

### Solder Together



Use silver solder paste sparingly on the reverse of the small silver piece, and place to the right of the larger silver rectangle. Solder them together, being careful to avoid melting the smaller piece of silver. You can place the larger piece on a wire mesh platform and heat from below if worried!

Pickle and rinse the rectangle, then use files and sandpaper to file away any excess silver from the smaller piece, until you end up with a uniformly smooth shape.



## Step 9

### Add the Clasp

Replace the jump ring on the bolt clasp with a 5mm one, feed through one end of the bracelet's chain, and solder close. Be careful to hold the link so you don't solder the chain to the jump ring, and keep heat away from the clasp itself as much as you can.

Use a hammer and block to flatten the 8mm jump ring. Attach to the other end of the bracelet chain, and solder shut. The bolt clasp will fasten onto this when the bracelet is shut.



## Step 7

### Prepare the Chain

Now take your length of chain, measure it, and mark the link at the half way point. Use flush or wire cutters to cut through one side of the link. Gently open the link (I find inserting chain or round nose pliers into the link and spreading them open works well), and separate the chain into two lengths.

## Step 8

### Attach the Chain

Carefully feed one open link of the chain through one of the holes on your silver rectangle and use pliers to close the link tightly. Hold the link at the bottom with your soldering pliers, so the cut is raised above the silver rectangle. This is fiddly, but worth it as you will not end up soldering the chain to the rest of the silver! Apply a small amount of solder paste to the cut, and solder closed.

Repeat to solder the other length of chain to the other side.



## Step 10

### Pickle

Pickle the whole piece and rinse. Use a product such as Liver of Sulphur, Platinoxol or Impress Enamel Ink to pick out the personalisation, and polish off any residue. Tumble polish the bracelet to finish.

### Optional:

Alternatively cover the personalised raised section with tape and scrub the whole piece with a brass brush, finally remove the tape and highly polish the raised section.

