

Level of
design:
Easy



Easter Charm Bracelet

By Jane Kharade

Create this beautiful charm bracelet with its gentle nod to Easter. Stamped pmc is combined with a punched silver sheet to make a striking contrast. The punched 925 is an interesting design feature, and as the egg charms themselves are quite plain and not overly embellished with Easter motifs the bracelet can be worn all year around.

What you'll need:

Jump Rings - 6mm x 6	NVH H60
Jump Rings - 5mm x 1	NVH H50
Turnable Caribiner Clasp - 16mm	NVG 02360
Silver Curb Chain 7"	WVV P00
Precious Metal Clay 3 55.5g	855 024
0.8mm Silver Sheet, 3cm x 6.5 cm	CSA 080

Tools

Brass Plate Flowers	700 505
Metal Bench Block	999 793
ImpressArt Number	999IA60
ImpressArt Hammer	999IA98
Permanent Marker Pen	997 P002
Hand Torch	999 7703
Soldering Block	999 968
Tweezers	999 987A
Scalpel	999 BAK
1mm Drill Bit	970 100
Pencil	997 462
Spacer And Roller Set	700 591
Double Sided Tape	
Needle Files (or Emery Papers)	999 527
Burnisher	999 AJL
Teflon Sheet	700 600
Round Nose Pliers	997 3023
Flat Nose Pliers	997 3021
Flush Cutter	997 3031
Saw Blades	999 096W
Saw Frame	999 735
Bench Peg and Anvil	999 082



Step 1

Create Egg

Roll out the PMC thinly and evenly on a sheet of Teflon. Place the brass plate over the clay and press the plate into the clay. Lay a small egg shaped card template gently over the clay and carefully cut out the egg charms. Use a sharp needle tool to add a hole in the top of each one. Leave the PMC to dry completely over night.



Step 2

Fire

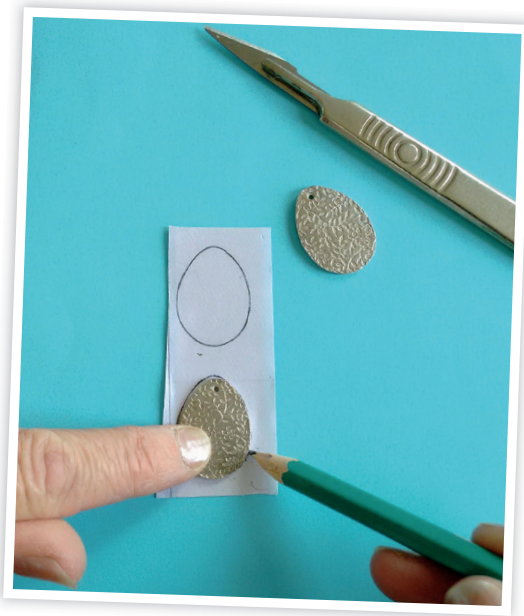
Once the PMC has dried out and looks like plaster, fire the eggs with a blow torch, keeping the flame evenly over the piece. Time each egg as the PMC starts to glow pink for 4 minutes and quench in cold water.



Step 3

Oxide

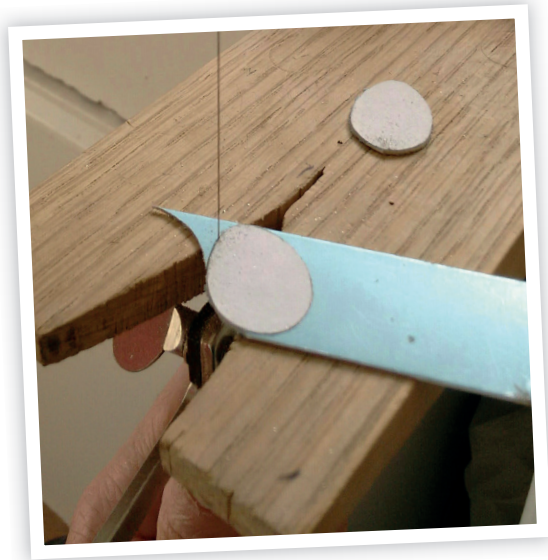
Use a wire brush with washing up liquid to brush the oxide from the eggs and clean the metal to reveal the silver.



Step 4

Prepare The Silver

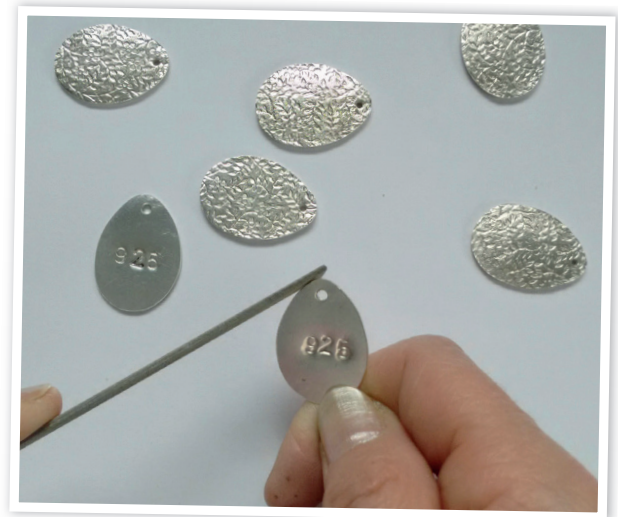
Stick double sided tape to a piece of piece of paper, use one of the silver pmc eggs and draw two egg shapes on the paper. Cut out the egg shapes with a scalpel, peel off the backing paper and stick them to a piece of 0.8mm silver sheet.



Step 5

Cut

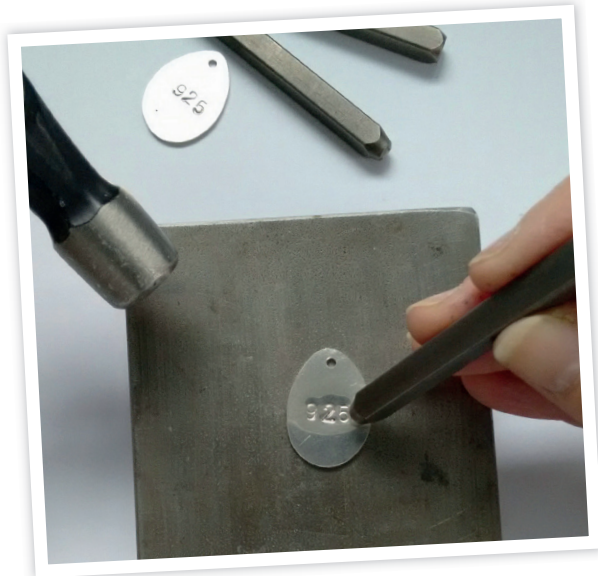
With the egg images attached to a sheet of 0.8mm silver, use a fine saw blade to saw out two egg charms. Add a hole at the top of each charm using a 1.5mm drill bit.



Step 7

File

Use a flat needle file to remove jagged edges on the silver from sawing and to refine all of the egg charms.

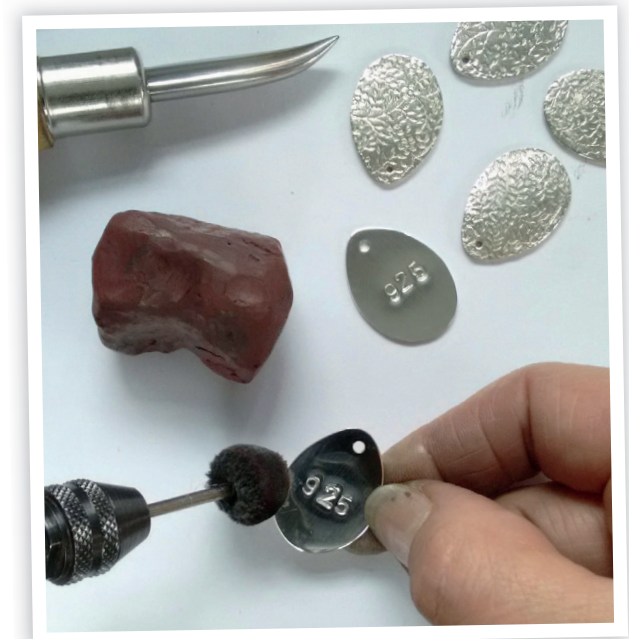


Step 6

Stamp

From the number punch set, pick out 9, 2 and 5. Punch out the middle number 2 centrally on the egg, then punch out the nine and five either side of it. The 925 detail can be darkened with liver of Sulphur to create contrast if so wished.

Optional: For something more personal you can always personalize using one of our large range of ImpressArt picture stamp available at Cooksongold.com.



Step 8

Polish

Polish all of the egg charms. Emery papers from coarse to fine can be used on the 925 eggs. Polishing compounds can be used to create a mirror finish on the surface of the silver. A metal burnisher is a great tool to use on the PMC eggs as the burnishing action hardens the softer PMC making more durable.



Step 9

Finish

Attach five 6mm jump rings to a length of curb chain long enough to fit the wrist. Space them evenly along the bracelet and add a 6mm jump ring to one end and add a turnable clasp to the other end via 5mm jump ring. Thread on the egg charms making sure all the jump rings are tightly closed.