



Classic Domed Earrings with Guardian Comfort Fit Ear Fittings

By Janet Royle

Follow this project to learn how to make 2 different designs for classic domed earrings, secured using Guardian ear fittings - hammered dome earrings in 9ct yellow gold, and inverted textured dome earrings in sterling silver.



What you'll need:

9ct Gold Round Blanks 13mm	YAA 023 x 2
Sterling Round Blanks 10mm	YSA 515 x 2
9ct Gold Guardian Comfort Ear Fitting	NBR 402 x 2
Sterling Silver Guardian Comfort Ear Fitting	NVR 402 x 2
Abrasive Paper, 600 Grit	975 060
Flexible Abrasive Boards	975 055
Impress Art Stamping Hammer	999 IA98
Impress Art Dandelion Stamp	999 IA16
Ball Pein Hammer	997 V009
Steel Bench Block	999 791
Doming Block and Punches	999 775A
Silver Solder Paste (Hard)	PAT 076
9ct Gold Solder Paste (Medium)	PAD 040
Starter Soldering Kit	999 096Q
Third Hand Base	999 AAA2
Maun Parallel Pliers	999 644
Optional: Barrel Tumbler	999 6025

Step 1

Preparation

First prepare the gold and silver blanks by sanding each side to remove surface scratches. Place your abrasive paper flat on your bench and use your fingertip to rub the blank over it, then rub over the finer grades of the flexible abrasive boards to obtain a smooth finish.



Step 5

Soldering

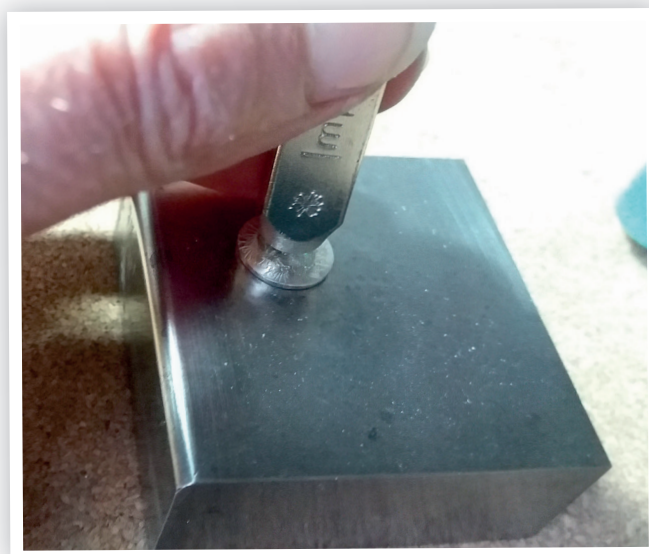
Solder the Guardian ear pin in the centre of the back of the dome, using the gold solder paste. Use a 3rd hand to hold the pin in place.



Step 6

Cleanse

Pickle and rinse the earrings.



Step 2

Hammer and Texture

To make the 9ct gold earrings with a hammered texture, place the prepared blanks on a steel block and hammer all over with the round end of ball pein hammer.

Step 3

Create the Domes

After texturing, use a doming block and punch set to form the blanks into domes (you may need to anneal the blank first to soften it before forming), placing the hammered side face down in the block.



Step 7

Add Your Design

For the sterling silver earrings, use the ImpressArt design stamp and hammer to create an all over random design on the blanks.

Step 8

Create the Dome

After texturing, use a doming block and punch set to form the blanks into domes (you may need to anneal the blank first to soften it before forming), placing the hammered side face down in the block.

Step 4

Smooth the Edges

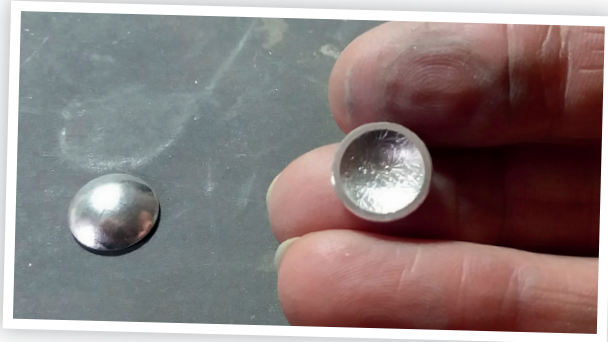
After forming both blanks into equal sized domes, use the abrasive boards to smooth the edges. d side face down in the block.



Step 9

Smooth It Over

Smooth off the top edge of the dome, by rubbing it over sandpaper to give a flat edge. Use the abrasive boards to smooth round the edges.



Step 10

Soldering

Solder the pin onto the back of the dome with the silver solder paste, using the 3rd hand to hold the pin in place. Be careful not to put too much pressure on the dome or it will collapse when it is heated.



Step 11

Clean and Strengthen

Pickle and rinse the earrings. Twist the ear pins using parallel Maun pliers to strengthen (work harden) the pin, and also to check your solder joint, by holding the pin firmly in the pliers and twist gently about a quarter of a turn.



Step 12

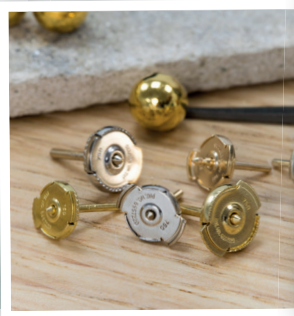
Polish and Perfect

Once you are happy with the pin fitting and the dome edges are all smooth, polish the earrings, ideally in a barrel polisher.

Step 13

Add Your Guardian

Once polished, fit on the Guardian fitting earring backs by gently squeezing the 2 edges together and sliding onto the ear post.



Step 14

Finished!

