



Level of
design:
Beginner



ASTROLOGER NECKLACE

By Zoe Rogers

What you'll need:

Zodiac Charm of your choice	
2x Sterling Silver 10mm Jump Rings	NVH H10
Sterling Silver 7mm Jump Ring	NVH H70
Sterling Silver 24" Loose Figaro Chain	WVF 102
18ct Yellow Gold 0.5mm Solder Wire	HPA 720
Sterling Silver 15mm Jumbo Bolt Ring	NVDA 0030
Silver Solder Paste	PAT 101
Assorted Flexible Abrasive Boards	975 055
Hand Torch	999 955
Emery Paper Grades 400	975 050
Emery Paper Grades 800	975 070
Tweezers	999 1262
Pliers Set	999 096L
Needle Files	999 528
Platinol Oxidising Solution	998 161A
No 5 Flux Powder	PZZ 050
Pumice Powder	998 224
Renaissance Wax	998 018R

1: CLEAN THE CHARM

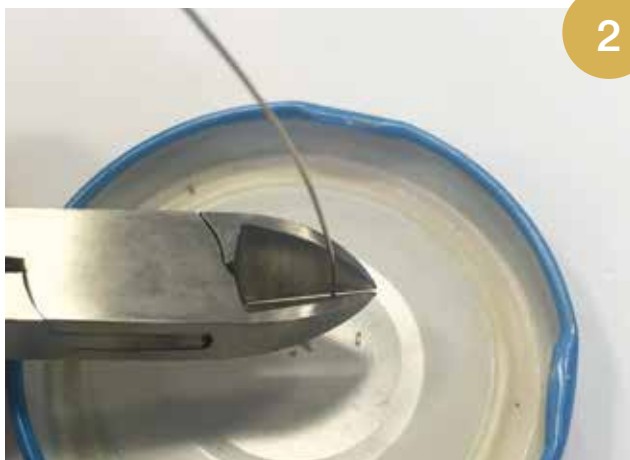
Clean any grease off the surface of the charm using pumice powder, water and a toothbrush, and dry it fully.



1

2: CLEAN AND CUT THE SOLDER

Clean the 18ct yellow gold solder using the pumice, dry thoroughly and cut it into small pieces, as small as possible using side cutter pliers.



2

3: FLUX YOUR CHARM

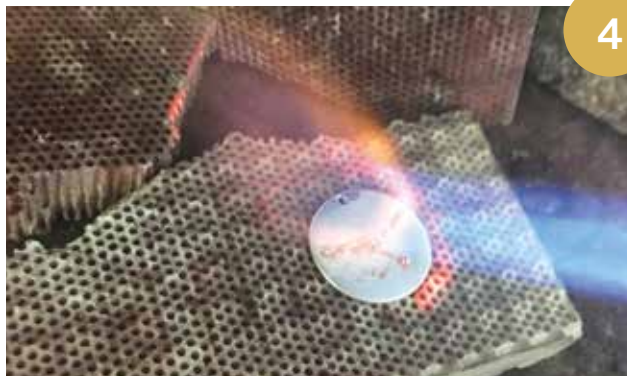
Mix the Flux Powder with water to create a paste, and carefully paint it into the zodiac sign. Using tweezers, dip the solder pieces into the flux individually, and place them within the zodiac sign.



3

4: SOLDER

Solder the piece together and leave it to cool slowly.



4

5: FINISH THE CHARM

Pickle, pumice and begin emery-ing the charm using grade 400 emery paper. Work up to grade 800, and then use the finest emery boards until the gold is flush on the surface and the original design is sharp.



5

ZODIAC CHARMS

Libra:	NV1 587	Virgo:	NV1 586
Leo:	NV1 585	Aries:	NV1 581
Pisces:	NV1 592	Aquarius:	NV1 591
Capricorn:	NV1 590	Scorpio:	NV1 588
Cancer:	NV1 584	Gemini:	NV1 583
Taurus:	NV1 582	Sagittarius:	NV1 589

6: ATTACH THE JUMP RING

Solder the 7mm jump ring to the charm, using a small flame. Pickle it once it is cool, pumice and clean it up.



6

7: PUMICE AGAIN

Pumice the pendant again, keeping the surface matt and grease free.

8: PAINT THE CHARM

Using a small brush, paint the charm and jump ring with platinol, wearing gloves and safety glasses. Rinse off any excess and dry carefully.



8

9: ATTACH THE JUMP RING AND CHAIN

Using a 10mm jump ring, connect the jumbo bolt ring to the chain. Solder using a small flame and clean up.

TIP

Don't pickle! Clean up using needle files and emery boards.



9

10: ATTACH THE SECOND JUMP RING

Attach the remaining 10mm jump ring to the other side but do not solder.



10

11: ALIGN THE CHAIN

Align the chain symmetrically, measure 9cm of chain from the centre up as the section to be oxidised.



11

12: OXIDISE THE CHAIN

Pumice the section of chain which is to be oxidised, rinse and dry thoroughly, and paint or dip into platinal, remembering gloves and safety glasses. Rinse and dry carefully.



12

13: GRADE THE CHAIN

Using the finest emery board, gently rub back the top three oxidised links, to create a gradient effect.

14: SOLDER

Take the unsoldered jump ring off, slide the zodiac charm onto the chain and re-attach the jump ring. Solder using a small flame and clean up. Do not pickle the whole necklace as this will remove the oxidised finish.



14

15: PROTECT YOUR PIECE

Protect the oxidised finish on the charm and chain using a small amount of renaissance wax. Use one cloth to dab on the wax, and a clean one to gently dab off to leave a thin layer.

