

Resin Christmas bauble decoration project

by Clare John



Step 1

Prepare your workspace

Prepare your workspace, tools and supplies. Set the iron to a medium temperature.



Step 2

Get ironing

Select your chosen colours of Angelina Fibre and spread to create a thin layer on top of one sheet of plain paper.

Place the other sheet of paper on top of the Angelina Fibre and iron on a medium heat. The Angelina Fibre should bond into a beautifully coloured, netted fabric sheet. Be careful not to iron any of the Angelina Fibre directly, as this may damage your iron! Leave to cool for a moment.



What you'll need:

Silicone bauble decoration mould

860 610

Beginner's resin kit with mixing set

860 031B



Acrylic block 10x10cm (optional) 860 032L

Angelina fibre mixed colours pack 860 032O

Gilding flakes, gold tone 860 032M

Arretil skin protection cream 860 032A

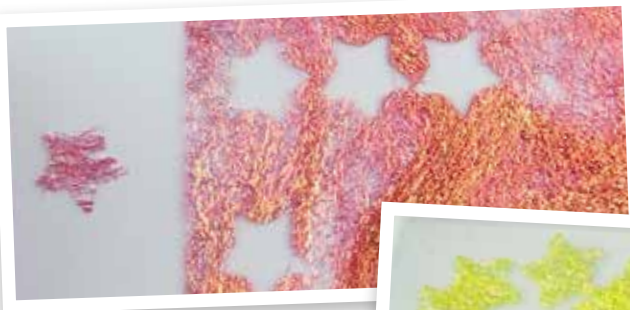
Pick and place tool 999 0941

Scales 999 88Y

Satin ribbon 10mm red 25m 994 947

Scissors 997 479

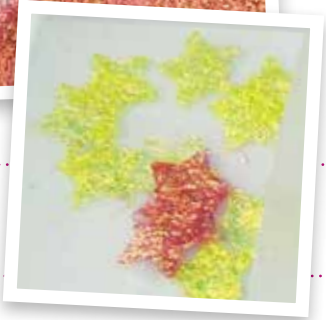
Plus... iron, 2 sheets plain paper, thread or ribbon of your choice and gold colour seed beads and/or glitter



Step 3

Reach for the stars

Using scissors or, if you have one, a star shaped paper cutter, cut the sheet of Angelina Fibre into festive star shapes. You can use a pencil or pen to pre-draw the shapes, or you can print off star shapes onto a sheet of paper and use it as a guide while cutting.



Step 4

Stir it up

Apply skin protection cream to your hands and use the scales to measure out 5g of clear base resin into a plastic mixing cup. Using the 2 parts resin, 1 part hardener formula, pour 2.5g of resin hardener into the same plastic cup. Stir well, but not vigorously, with a wooden stirrer.



Step 5

Get pouring

Place the silicone bauble mould onto a 10 x 10cm acrylic block. Pour a thin layer of the resin and hardener mix into the mould, smoothing with the wooden stirrer. Use a pick and place tool to pick up your Angelina Fibre stars and place on top of the resin where desired.



Step 6

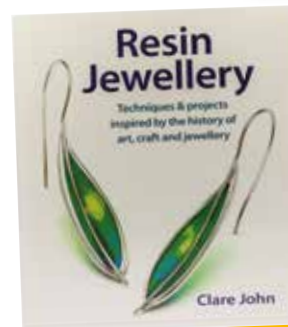
Pour some more

Add gilding flakes, gold seed beads, microbeads or glitter to create an even more sparkling texture – it's up to you what to use and how much to add! Finish the bauble mould by pouring another layer of the resin and hardener mix over the top of your decorations. Leave to set, ideally overnight.

Step 7

The finishing touch

Once your resin decoration has set, carefully remove it from the silicone bauble mould and remove any rough edges. Finally, add your chosen thread or ribbon and tie to complete your resin Christmas decoration design! (Our range of satin ribbons would work perfectly!)



Reading list

Resin Jewellery
By Clare John
(999 A144)

This great guide to working with epoxy resin is full of inspiring resin jewellery projects, techniques and tips!