



# Make this beautiful semi-set mount ring with our easy step-by-step guide

by Sharon Philogene

Setting a gemstone in a semi-set ring mount can be easier than you think. With our help that is!



## Step 1

### Get set

Before you start work, protect yourself by putting on the optivisor. Next, secure the ring in a ring clamp and insert the gemstone into the bezel ready to be set.

## Step 2

### Gently does it

Hold the ring clamp steady and press one of the prongs against the gemstone, pressing your thumb or finger on the opposite side to the prong to help keep the gemstone in position.



## What you'll need:

**Semi set ring mount** FBRS 1101

**Gemstone to fit**  
61RH OV53



**Optivisor 2.5 or 3.5** 999 233

**Bezel / prong pusher** 999 AKT

**Ring clamp / holder**  
999 AKU



**Extra fine Eveflex burr** 970 300

**Leather pendant wheel**  
999 ACQ



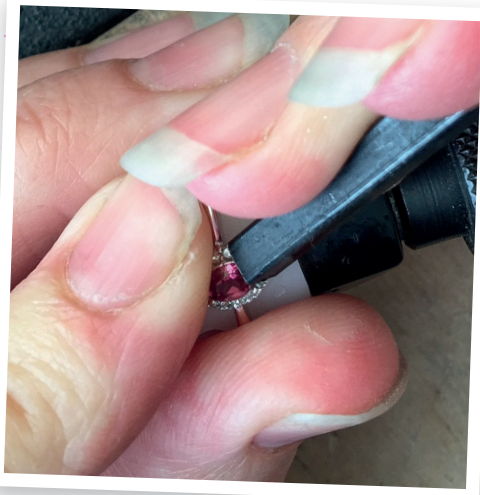
**Jeweller's rouge** 998 189



## Step 3

### Press on

Next, press on the prong that is opposite the one you have just pressed, ensuring the gemstone is straight and in the desired position. Now press the two other prongs.



## Step 4

### Check the positioning

With all the prongs now pressed up against the gemstone, check its position and, if you're happy, repeat the steps above pressing harder this time.

If the position of the gemstone doesn't seem quite right, use pliers to gently pull back the prongs, reposition the gemstone and start again.

## Step 5

### Securing your gemstone

Once all the prongs have been pressed against the gemstone fixing it firmly in place, press down from the top to secure your setting.



## Step 6

### The finishing touches

Now your gemstone is securely set, your next step is to remove any marks left by the bezel pusher.



Use an extra fine Eveflex burr to remove any marks and then

polish the prongs with a leather pendant wheel or similar with polishing compound. You could also put the ring into an ultrasonic cleaner dependent on the gemstone used.

