

# Seaside Bangle Stamping Project

by Janet Royle

Make an impression with this seaside themed bangle by jewellery designer Janet Royle...



Level of design:  
Beginner

## Step 1

### Prepare

Plan out your design by drawing around the blank and use this as a template for ideas, thinking about your theme and lettering. Peel off one side of the protective plastic strip. This will be side you are stamping on.

## Step 2

### Stay put

Place your blank on the block then use tape to secure the bangle as it needs to sit very flat on the block for successful stamping. Before stamping write your lettering in 'freehand' as a guide.



**Tip:** Make sure the stamps have the impress art logo facing you for correct orientation. If your stamps don't have this write the letter on each one, so that when it is facing you it is in the correct position to stamp. Easy!

## What you'll need:



**ImpressArt Aluminium bangle blanks**

999 IB02

**ImpressArt Newsprint Lowercase Letter Stamp Set 4mm**

999 IA57

**ImpressArt Ship Wheel Design Stamp 6mm**

999 I147

**ImpressArt Sea Horse Design Stamp 6mm**

999 IA04

**ImpressArt Nautilus Shell Design Stamp 6mm**

999 IA25

**ImpressArt Love Hearts Stamp Set Pack of 3**

999 IA82

**ImpressArt Tape** 999 IA67

**ImpressArt Stamping Ink** 999 I125

**ImpressArt Bangle Bending Tool**

999 IA77

**Beadsmith Bracelet Bending Pliers With Nylon Jaw**

999 CB8J



**Tip:** Keep a piece of blue-tac next to your work and just impress lightly into it before stamping to check the stamp's size and position.

## Step 3

### *Bang, wallop!*

Hold the stamp level against the blank and hit it firmly with the hammer once. Practise on some scrap metal before stamping your final piece so you can see how hard to hit the stamp, as smaller stamps impress more deeply than larger ones.

If you double hit the hammer, you will end up with a blurred image. Also, don't place stamps too close to the edge of the metal as it will squash the edge.



## Step 4

### *Fill the groove*

Once you are happy with the stamping, use ImpressArt ink to fill the newly stamped grooves. Carefully apply the ink over each stamping.

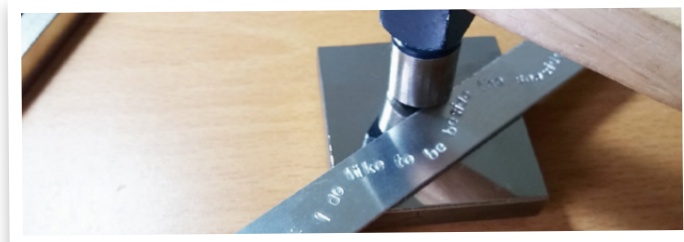
Leave for 10 – 15 seconds (no longer than this as it dries quickly), rub the ink with a cotton bud to ensure that it has gone into the grooves of the stamping, and then wipe off with a soft cloth or tissue.



## Step 5

### *Adding texture*

Gently texture the edge of the bangle with a smooth flat headed hammer. (Be careful not to hammer too hard or you'll damage the edges).



## Step 6

### *Round the bend*

To finish the bangle, place one end in the lip on the bangle bender. Hold on to this whilst gently bending the metal around the curve. Then, place the other end of the bangle into the lip and curve this around too.



## Step 8

### *Finishing touches*

Finish by working the bangle bending pliers around the curve starting at the centre. Remove the protective strip from the inside of the bangle. Et voila!



**You Tube** Visit [youtube.com/cooksongold](https://www.youtube.com/cooksongold) to see our project video.