

Rainy day bracelet

by Sara Ellis



Step 1

Set up the jig

Following the instructions included with the Artistic Wire 3D Bracelet Jig, set up the jig using seven pegs as follows:

- Determine which will be the top of the jig and which will be the bottom. Starting from the top, count down two rows and place the first peg. This will be the centre of the design.
- Below this peg, down one row, place four pegs, side by side, using the peg from the previous step as the centre point.
- From the first peg in the line of four, count back nine holes, moving around to the other side of the jig, and place a peg. This will be your starting peg.
- From the last peg in the line of four, count forward nine holes, moving around to the other side of the jig, and place a peg. This will be your finishing peg.
- Double check that you have placed the pegs correctly. If the pegs have been placed correctly, the starting peg and the finishing peg should sit side by side on the opposite side of the jig from your design.

Step 2

Start wrapping the wire

Lay the 16 gauge Artistic Wire on the outside of the starting peg, leaving approximately 1" of wire to hold with your thumb and wrap the long portion of the wire around the peg in a counter clock-wise direction.



What you'll need:

16 gauge silver Artistic Wire

701 031

24 gauge grey Artistic Wire

701 070



4x silver jump rings 4mm

NVH H40

2x silver jump rings 6mm

NVH H60

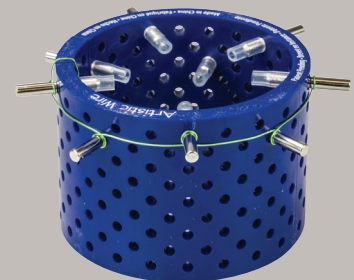
Silver lobster clasp 9mm

NVF L09

Tools

Artistic Wire 3D Bracelet Jig

999 CB8T



Flush cutter

997 3005

Bent nose pliers

997 3016

Step 3

Wrap round the jig to the first peg

Wrap the wire along the circumference of the jig, up to the first peg in the design.

Wrap the wire clock-wise around the peg.

Step 4

Continue wrapping to the last peg

Continue along the path of the pegs, wrapping clock-wise around each peg in the design.

From the last peg, wrap the wire along the circumference of the jig, up to the finishing peg.

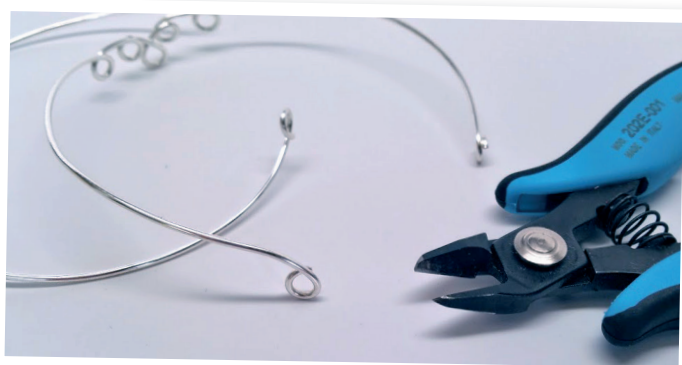
Step 5

Trim the wire and remove from the jig

Wrap the end of the wire counter clock-wise around the finishing peg. Trim the excess wire, leaving approximately 1" of wire.

Check to make sure all of your loops are flat against the jig, using your bent chain nose pliers to push the wire down to the surface of the jig.

Remove the pegs from the jig to free the bracelet.



Step 6

Flush cut the ends and then make another

Using the flush cutter, trim the wire at both ends of the bracelet so that the wire forms closed loops at each end.

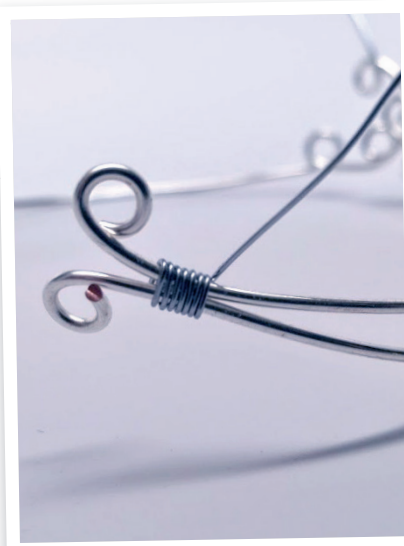
Repeat steps 2-6 to create a second bracelet.

Step 7

Wrap both sections together

Taking both created bracelet sections, hold them together so that they are mirror images of each other.

Using 24 gauge Grey Artistic Wire, begin wrapping the two sections together, starting at the end loops. Wrap approximately 6-7 times around both bracelet sections.



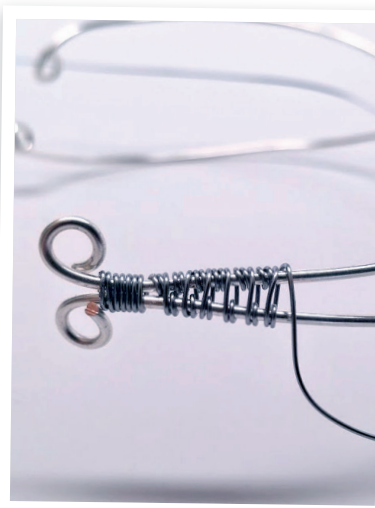
Step 8

Start the wire wrap pattern

Once the two sections are secured on one end, begin wrapping the two sections as follows:

- From the outside, over the top, through the middle, under the back, coming back to the outside, then around the outside and over the top, through the inside and across to the back of the second wire, around the outside, over the top of wire 2, through the middle, around the outside of wire 2 again, through the middle and across the back of wire 1 and so on.

- To keep the wrapping neat, push the wire down so that it is nested against the previous wrap.



Step 9

Continue wrapping to the centre

Continue wrapping with this pattern, keeping an even distance between the two sections of the bracelet until you are approximately 1/2" away from the beginning of the centre design.

Step 10

Trim and tuck the ends

When you reach the centre design, begin wrapping completely around both wires as you did in step 7.

Wrap one last time just around the top wire and trim the wire using the flush cutter.

Using bent nose pliers, tuck the end of the trimmed end towards the previous wraps and out of the way.



Step 11

Repeat for the other side

Repeat steps 7-10 on the opposite side of the bracelet, creating a wire wrap that mirrors the side you have already completed.

Step 12

The finishing touches

Using bent nose pliers, attach 4mm jump rings to each loop on both ends of the bracelet. Close the jump rings.

Using bent chain nose pliers, thread a 6mm jump ring through both of the 4mm jump rings on both ends of the bracelet and close the jump ring.

Attach the lobster clasp to one of the previously attached 6mm jump rings.

The finished bracelet should look like the main image on page 1.