

tools

polishing materials

abrasive tapes & cords, abrasive rubber blocks, water of ayr stones

Code	Description	Price/£
------	-------------	---------

Abrasive Tapes & Cords:

998 210	Tape 60C	18.20
998 168	Tape 56C	16.75
998 170	Cord 53C	16.46

See chart for details on cords and tapes. Other sizes and types of cord and tape are available on special order. Please ring for an information sheet.

Abrasive Rubber Blocks:

999 AFO	Rubber Blocks (Extra Coarse)	4.45
999 CFI	Rubber Blocks (Coarse)	4.45
999 CFJ	Rubber Blocks (Medium)	4.45
999 CFK	Rubber Blocks (Fine)	4.45

Polishing Thread:

999 CBA	Polishing Threads 50g (100 metres)	7.95
---------	------------------------------------	------

Flat Polishing Thread:

999 2049	Flat Polishing Thread 7mm strip x 100 metres reel	22.06
999 2050	Flat Polishing Thread 10mm strip x 100 metres reel	26.68

Water of Ayr Stone*:

A natural stone for the gentle removal of fire stain on flat silver items. Use with water.

999 AF1	WOA Stone	Medium	10.98
---------	-----------	--------	-------

* Subject to availability.

999 168



999 CFJ



999 CBA



999 2049



999 AF1



Abrasive Tapes & Cords

Nº	Type	Width	Grade
998 210	Crocus Tape	0.38mm	Fine
998 168	Crocus Tape	2.38mm	Fine
998 170	Crocus Cord	1.02mm	Fine

Rubber Blocks

Colour	Grade	Grit
Wine	X Coarse	36
Blue	Coarse	60
Grey	Medium	120
Brown	Fine	240



Abrasive Tapes & Cords

- to replace emery cloth strips. The tapes and cords are impregnated with abrasive on both sides and therefore will not tear or fray and can be cut to any desired length for use on machined metal surfaces including slots and holes
- approx. 50ft / 15m in a roll.



polishing materials

emery paper, flour & glass paper, wet & dry paper

Code	Description	Price/£
Emery Paper: 23 x 28cm (9 x 11")		
Dry preparation of metal surface		
973 030	Grade: 2 1 Sheet	0.42 ea.
973 040	Grade: 1 25 Sheets	0.38 ea.
973 050	Grade: 1G 50 Sheets	0.34 ea.
973 070	Grade: 1F	
973 090	Grade: 2/0	
973 110	Grade: 4/0	

Flour Paper: 23 x 28cm (9 x 11")

Dry preparation of metal surface, finest grit.

974 040	Grit: 240 1 Sheet	0.35 ea.
	25 Sheets	0.23 ea.
	50 Sheets	0.18 ea.

Wet & Dry Paper: 23 x 28cm (9 x 11")

Wet & dry preparation of metal surface

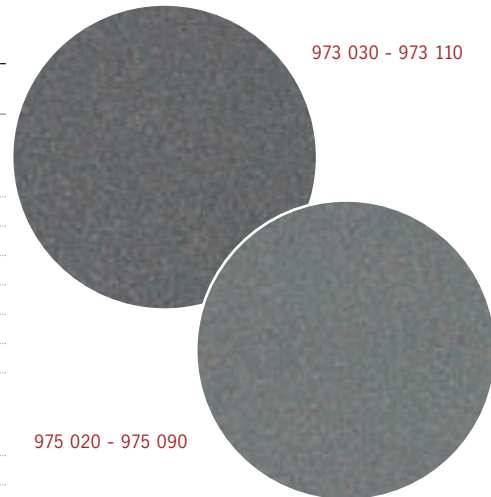
975 020	Grade: 240 1 Sheet	0.69 ea.
975 030	Grade: 320 25 Sheets	0.52 ea.
975 040	Grade: 360 50 Sheets	0.44 ea.
975 050	Grade: 400	
975 010	Grade: 500	
975 060	Grade: 600	
975 070	Grade: 800	
975 080	Grade: 1000	
975 090	Grade: 1200	

Abrasive Paper:

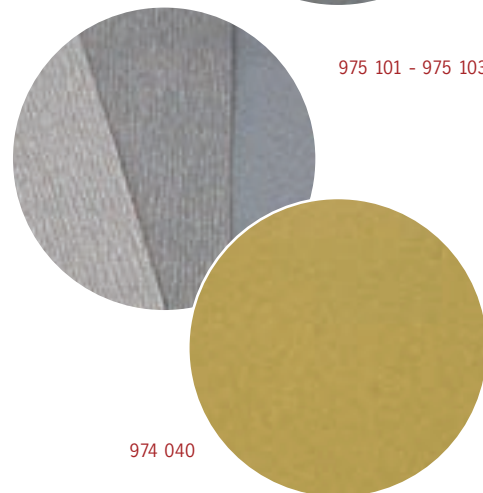
This silicon carbide abrasive paper is ideal for use with Platinum. For dry use only.

975 101	360 grit Coarse	
975 102	400 grit Medium	
975 103	500 grit Fine 1 Sheets	0.78 ea.
	10 Sheets	0.53 ea.

Please Note: All papers sold are 11" x 9" (280mm x 230mm). We do not sell crocus paper - the nearest equivalent is 4/0 emery paper



975 020 - 975 090



974 040

Emery Paper

Roughest
2
1
1G
1F
2/0
4/0
Finest

Wet & Dry Paper

Roughest
240
320
360
400
500
600
800
1000
1200
Finest

tools

polishing materials

polishing sticks, emery sticks & smergel strips

Code	Description	Price/£
------	-------------	---------

Polishing Sticks:

999 AFQ	Felt Buff Stick	2.89
999 AFR	Chamoise Buff Stick	2.89

Emery Sticks:

999 FAG	Flat Medium	0.87 ea.
999 FAJ	½ Round Medium	0.87 ea.
999 FAM	Round Medium	1.79 ea.
999 FAP	3 Square Medium	1.16 ea.

Smergel Strips:

999 120A	Pack of 6 assorted Strip size 2 x 16cm. Each grade supplied in pack of 5 strips. A durable abrasive strip in three grades, with reuseable self adhesive backing. Can be attached to any surface, eg. the back of a file and cut to any shape. Ideal for working with Palladium.	9.87
----------	--	------

Polishing Sticks:

998 024	Set of three pieces 4mm diameter sticks, 100mm length flat square and pointed. Per set.	2.43
---------	--	------



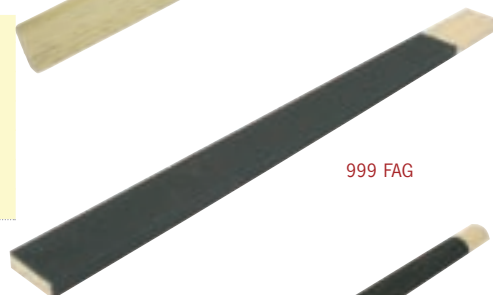
998 024



999 AFQ



999 AFR



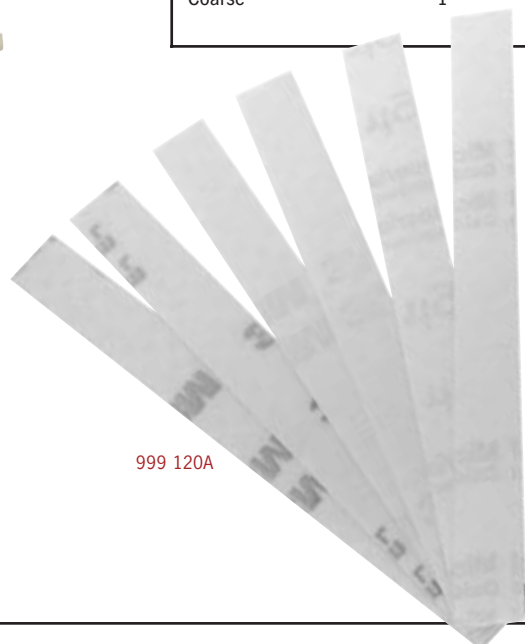
999 FAG



999 FAJ

EMERY STICK GRADES

Fine	1F
Medium	1G
Coarse	1



999 120A



polishing sticks 998 024

Cookson have introduced a range of polishing sticks made from bonded glass fibre. They can be used to get into the smallest corners and spaces to produce a bright satin finish.

Fire stain and casting oxides are easily removed. In normal use they are self maintaining, however they can be reshaped by filing or using aluminium oxide paper.

polishing compounds

rouge, tripoli, emery compound, satene, hyfin, carborax

Code	Description	Price/£
------	-------------	---------

Rouge & Rouge Powder:

For final finishing

998 189	Pure Rouge - 120g / 4oz For final polishing of gold, silver and other soft metals	2.16
998 190	Pure Rouge - 500g / ½ kg As above, but larger bar	4.34
998 191	AA Rouge - 480g Dry ultra fine rouge for gold & silver	5.26
998 192	Radio Rouge - 370g For final polishing of brass and similar metals It is a harder compound than other rouge	4.97
998 184	Platinum Polish - 60g	4.91
999 2096	Polishing Cream For cleaning & polishing all metals & plastic by hand	2.20
998 193	Rouge Powder - 20g / 4oz	2.43

General Polishing Compounds:

999 2093	Lustre (Tripoli) Small Bar - 120g	1.91
998 198	Lustre (Tripoli) - 700g For initial polishing of most metals Will remove scratches left by emery paper	3.53
998 199	Emery Compound - 820g For initial polishing of most metals	3.86
998 201	Hyfin - 810g For polishing stainless steel. Some craftsmen use it in place of Tripoli	4.74
998 202	Carborax - 810g For steel and stainless steel and initial polishing of brass and other metals	4.62



998 189



998 190



998 184



998 193



998 198



998 202



998 199



999 2093



tools

polishing compounds

vonax, dialux, pumice powder, drying unit & media

Code	Description	Price/£
Vonax:		
998 208	Vonax - 710g For polishing perspex and other plastics	4.92
999 2081	Vonax - 100g (Dialux) Pre polishing for all ferrous metals	4.36
Dialux:		
High grade polishing compounds		
999 2087	Yellow Dialux - 100g Pre polishing for non ferrous metals & plastics	4.36
998 215	Red Dialux - 100g For a very high finish for gold and silver	4.36
998 216	Green Dialux - 100g Super finishing for platinum, steel and other hard white metals	4.36
998 217	Blue Dialux - 100g For super fine polishing of all metals	4.36
998 218	Grey Dialux - 100g Super finishing for silver	4.36
998 194	White Dialux - 100g Finishing compound for all metals	4.36
Pumice:		
998 224	Pumice Powder - 1kg. A fine natural abrasive powder. Mix with water & apply with a hand brush, or rub directly onto surface with a soft cloth. Rinses clean with water.	4.29
Plato Platinum Polishing System		
As used in Japan to produce the highest quality finish on platinum jewellery.		
998 180	Plato Red Compound, 800 grit, 100gms	12.13
998 181	Plato Orange Compound, 1500 grit, 100 gms	12.13
998 182	Plato Green Compound, 8000 grit, 55 gms	12.13
998 183	Plato Blue Buff Wheel, 125 mm	8.67



999 2087



998 194



998 215



998 216



998 217



998 218



998 180



998 183



Using the Plato polishing system

Attach Blue buffing wheel to polishing motor. Apply a small amount of Red Plato to the right half of wheel & commence polishing, moving the piece slowly across to the clean half. Follow this with the Orange Plato & then Green, using the same technique.

polishing materials

calico mops, reflex, muslin, swansdown & stitched cotton mops

Code	Description	Price/£
Calico Mops:		
Coarse fabric for pre polishing		
999 AFS	Hard Calico Mop 4" x 1"	6.47
999 AFT	Hard Calico Mop 5" x 1"	7.22
999 AFU	Hard Calico Mop 6" x 1"	8.44
999 87N	Medium Calico Mop 4" x 1"	4.76
999 87N2	Medium Calico Mop 5" x 1"	6.15
999 87P	Medium Calico Mop 6" x 1"	7.44
999 CA2	Soft SS Calico Mop 4" x 1"	4.80
999 AFV	Soft SS Calico Mop 5" x 1"	5.32
999 CBF	Soft SS Calico Mop 6" x 1"	6.38

Reflex Mops:

Soft fine fabric final polish

999 AFW	Reflex Mop	4" x 1"	5.48
999 AFX	Reflex Mop	5" x 1"	6.83
999 AFY	Reflex Mop	6" x 1"	7.64

Muslin Mops:

Soft very fine fabric for final polish for final polish

999 CA8	Muslin Stitched Mop	6" x 1" HF	6.62
---------	---------------------	------------	------

Swansdown Mops:

Soft fine fabric final polish

999 AFZ	Swansdown Mop	2 1/2" Metal centre	2.50
---------	---------------	---------------------	------

Stitched Mops:

999 AGA	Stitched Cotton Mop	4" x 1" PP	4.31
999 AGB	Stitched Cotton Mop	5" x 1" PP	6.62
999 AGC	Stitched Cotton Mop	6" x 1" PP	7.32
999 87Q	Stitched Yellow Mop	4" x 1/2" FP	5.41
999 88A	Stitched Yellow Mop	5" x 1/2" FP	6.16
999 88B	Stitched Yellow Mop	6" x 1/2" FP	8.01

Please note: Yellow mops are softer than calico stitched mops.

Stitched Mops:

New range of white, fine, soft stitched mops

999 AG1	Fine HF	3" x 0.5"	2.31
999 AG2	Fine HF	4" x 1"	4.10
999 AG3	Fine HF	6" x 1"	6.97



999 AFT



999 AFX



999 AFZ



999 CA8



999 AG1



Stitched mops:

Stitching keeps the mop's surface compact & rigid. The more rows of stitching the more aggressive the mop. Two or three rows of stitching on a mop is ideal for final polishing.

PP = Pre-Polish
FP = Final Polish
HF = High Finish

Conversion Table

Inch	mm
4 x 1	=100 x 25mm
5 x 1	=125 x 25mm
6 x 1	=150 x 25mm

tools

polishing materials

wool mops, hard felt wheels & knife edge felt wheels

Code	Description	Price/£
Cotton Mops:		
999 AGD	Cotton Mop 2" wooden centre	4.39
999 AGF	Cotton Mop 4" wooden centre	7.36
999 AGG	Cotton Mop 3" x 2" wooden centre	7.64
Hard Felt Wheels:		
999 AGH	Hard Felt Wheel 2" x ½"	3.28
999 AGI	Hard Felt Wheel 3" x ½"	5.27
999 AGJ	Hard Felt Wheel 4" x 1"	7.61
999 AGK	Hard Felt Wheel 6" x 1"	10.53
Knife Edge Felt Wheels:		
999 AGM	Knife Edge Felt Wheels 3"	6.56
999 EAV	Knife Edge Felt Wheels 4"	7.97
Scotchbrite Wheels:		
For Satin Finish		
999 AGS	Scotch Brite Wheel 3 layer x 4"	3.87
999 AGT	Scotch Brite Wheel 3 layer x 6"	5.36
999 2162	Solid Wheel medium grade - 100 x 25mm	8.33
999 2155	Solid Wheel fine grade - 100 x 25mm	8.33



999 AGD



999 AGF



999 AGG



999 AGH



999 AGI



999 AGJ



999 AGK



tools

polishing materials

finger felts, cork brushes, abrasive mounted fingers, cup, brush & mop

Code	Description	Price/£
Finger Felts:		
999 AGO	3½" Mounted Finger Felt	4.76
999 AGN	4" Mounted Finger Felt	5.36
999 CB3	5" Mounted Finger Felt	5.72
999 AGP	Unmounted Finger Felts	2.98
999 AGQ	Christmas Tree Felts	6.73
999 2163	75mm Mounted Finger Felt with metal ferrel	6.60
Cork Brushes:		
999 AGR	Bristle Cork Brush	1.79
Cup, Brush & Mop:		
(for inside of cup or bowl)		
999 2158	White Fabric 50mm pre polish	13.86



999 AGN



999 CB3



999 AGP



999 AGQ



999 2158



999 AGR



Polishing the inside of a ring using a mounted Finger Felt (999 CB3)



order online: cooksongold.com

tools

polishing materials

bristle lathe brushes, steel lathe brushes, brass lathe brushes

Code	Description	Price/£
Bristle Lathe Brushes:		
944 010	Bristle Lathe Brush 2". Stiff black - metal centre	1.21
945 010	Bristle Lathe Brush 2". Soft white - metal centre	1.95 for 1-9 1.76 for 10+
999 AGW	Bristle Lathe Brush 2½". Stiff black - plastic centre	1.75
999 CAH	Bristle Lathe Brush 3". Stiff black - plastic centre	1.71
999 AGZ	Bristle Lathe Brush 3". Stiff black - wooden centre	1.75
Brass Lathe Brushes:		
999 AHC	Brass Lathe Brush 2". Metal centre	2.03
999 AHD	Brass Lathe Brush 4". Wooden centre	6.76



999 AGZ



945 010



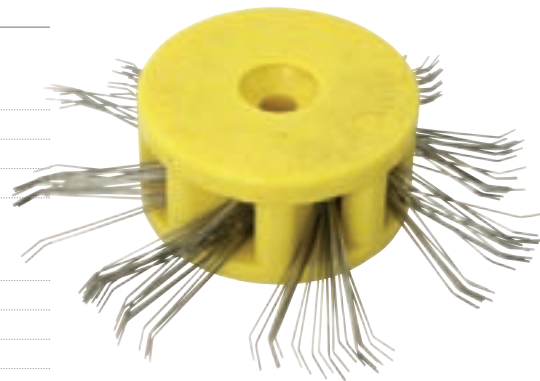
999 CAH



polishing materials

frosting wheels

Code	Description	Price/£
Frosting Wheels:		
999 AHE	Frosting Wheel - extra fine 0.20mm	22.53
999 AHF	Frosting Wheel - fine 0.30mm	22.53
999 AHG	Frosting Wheel - medium 0.45mm	22.53
999 AHH	Frosting Wheel - coarse 0.60mm	22.53
Frosting Wheels: (with angle tip)		
999 2216	Frosting Wheel - extra fine 0.20mm	23.05
999 2218	Frosting Wheel - fine 0.30mm	23.05
999 2219	Frosting Wheel - medium 0.45mm	23.05
999 2217	Frosting Wheel - course 0.50mm	23.05



999 2219



...eye protection?
see page 518



999 AHG



999 AHF

These steel wire wheels create a beautiful textured finish quickly & easily.



tools

polishing materials

artifex grinding wheels 4" & 6", artifex grinding fingers



Code	Description	Price/£
Artifex Wheels - 4": with 13mm bore		
999 AHI	Artifex Wheel - 4" x 1" - 80 M.P.	20.75
999 AHJ	Artifex Wheel - 4" x 1" - 150 M.P.	20.75
999 AHK	Artifex Wheel - 4"x 1" - 250 M.P.	23.47
999 AHM	Artifex Wheel - 4" x 1" - 150 H.P.	20.75
999 AHN	Artifex Wheel - 4" x 1" - 250 H.P.	24.81
Artifex Wheels - 6": with 13mm bore		
999 AHO	Artifex Wheel - 6" x 1" - 80 M.P.	34.08
999 AHP	Artifex Wheel - 6" x 1" - 150 M.P.	32.92
999 AHQ	Artifex Wheel - 6" x 1" - 250 M.P.	42.80
Artifex Fingers:		
999 AHT	Artifex Finger 150 M.P.	12.42
999 AHU	Artifex Finger 250 H.P.	15.22



999 AHK



999 AHT

ARTIFEX GUIDE

MP	Medium Rubber
HP	Hard Rubber
80	Course Grit
150	Medium Grit
250	Fine Grit

E.g 80 H.P. = Hard Rubber, Course Grit



check out our range of safety equipment pages 517



These wheels should not be used on a tapered spindle, but in a grinding attachment guard.



...grinding motors?
see page 608

tools

hand brushes

washing out brushes, bench brushes, brass brushes, glass brushes

Code	Description	Price/£
Washing Out Brushes:		
999 159	Bristle Washing Out Brush - bone handle	5.72
999 160	Bristle Washing Out Brush - plastic handle	2.72
Bristle Bench Brushes:		
999 166	Black Bench Brush	3.76
999 167	Soft White Bench Brush	6.36
Brass Brushes:		
999 173	Wooden handle brass brush - 4 row	4.07
999 174	Wooden handle brass brush - 6 row	4.60
999 175	Brass pencil brush	4.86
999 176	Brass pencil brush refills for 24	10.63
Glass Brushes:		
999 181	Small string bound glass brush	5.95
999 182	Large string bound glass brush	6.70
999 183	Glass pencil brush	4.51
999 185	Glass pencil brush refills for 24	9.65



999 159



999 160



999 166



999 167



999 173



999 174



999 175



999 181 & 999 182



999 183



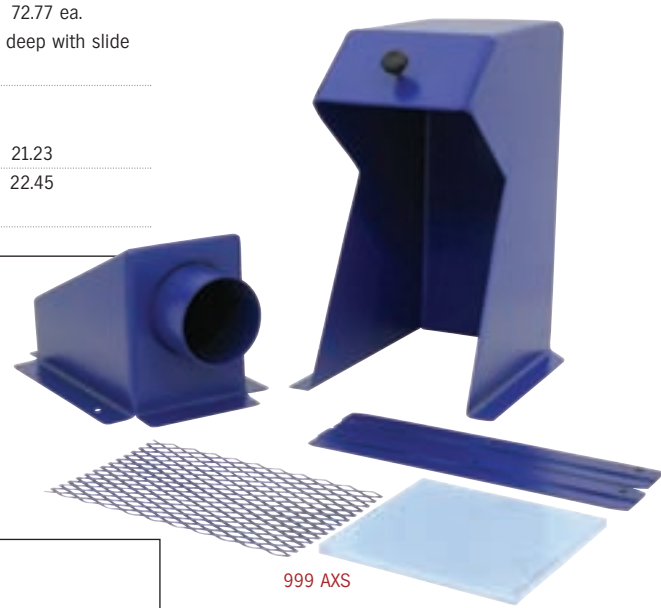
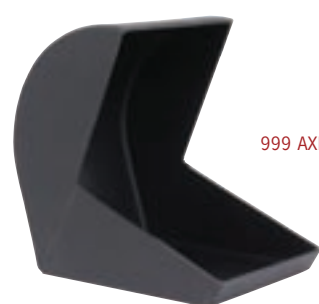
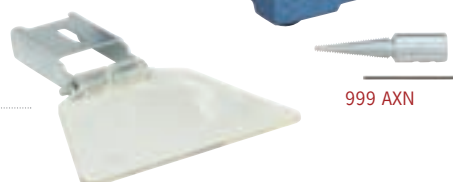
999 185

order online: cooksongold.com

polishing motors

polishing motors, grinder, spindles & dust hoods

Code	Description	Price/£
Polishing Motors:		
999 AXL	½ H.P. Polishing Motor - 2850 RPM Includes spindles - ½" x 2"	16748
999 AXM	1 H.P. Polishing Motor - 2850 RPM Includes spindles 5/8"	22095
999 CAS	½ H.P. Polishing Motor - 2850 RPM With right hand spindle and left hand attachment for Artifex or rubber wheel including safety shield and tool rest.	16748
Polishing / Grinding Motors:		
999 AXN	½ H.P. Polishing / Grinding Motor 2850 RPM With right hand spindle & left hand grinding wheel including safety shield and tool rest.	16748
Spare Spindles:		
999 CBG	½" Left Spindle	16.38 ea.
999 CBH	½" Right Spindle	16.38 ea.
Please Note: for ½ H.P. Polishing Motors listed above only		
999 CBK	¾" Left Spindles	12.13 ea.
999 CBL	¾" Right Spindles	12.13 ea.
Please Note: for 1 H.P. Polishing Motors listed above only		
999 AXO	½" Left Hand Spindle	11.53 ea.
999 AX1	½" Right Hand Spindle	11.53 ea.
999 AXQ	14mm Left Hand Spindle	16.88 ea.
999 AX2	14mm Right Hand Spindle	16.88 ea.
Dust Hoods:		
999 AXR	Plastic Dust Hood	2772 ea.
999 AXS	Metal Dust Hood	7277 ea.
With collection tray & guard. This hood is 29cm high x 13cm wide x 20cm deep with slide runners, mesh filters & a base fitting.		
Grinding wheel attachments:		
999 CBK1	½" left hand grinding wheel attachment	21.23
999 CBK2	¾" left hand grinding wheel attachment	22.45
Right hand fitting can also be supplied		



...lathe brushes?
see page 604